

For Research Use Only

# CD45 Monoclonal Matched Antibody Pair, PBS Only



Catalog Number:MP50221-1

## Capture Antibody Information

**Catalog Number:**  
60287-2-PBS

**Host:**  
Mouse

**Isotype:**  
IgG1

**Purification Method:**  
Protein G Magarose purification

**Clone ID:**  
4F3B7

**Reactivity:**  
Human

**GenBank:**  
BC014239

**Immunogen Catalog Number:**  
Ag13712

**Conjugate:**  
Unconjugated

**Full name:**  
protein tyrosine phosphatase, receptor type, C

**Gene ID:**  
5788

## Detection Antibody Information

**Catalog Number:**  
60287-3-PBS

**Host:**  
Mouse

**Isotype:**  
IgG1

**Purification Method:**  
Protein G Magarose purification

**Clone ID:**  
3H1G3

**Reactivity:**  
Human

**GenBank:**  
BC014239

**Immunogen Catalog Number:**  
Ag13712

**Conjugate:**  
Unconjugated

**Full name:**  
protein tyrosine phosphatase, receptor type, C

**Gene ID:**  
5788

## Applications

**Tested Applications:**  
Cytometric bead array

**Range:**  
1.563-100 ng/mL (Cytometric Bead Array)

**Recommended Dilutions:**  
It is recommended that this reagent should be titrated in each testing system to obtain optimal results.

## Product Information

MP50221-1 targets CD45 in immunoassays as a matched antibody pair. Validated in Cytometric bead array.

Capture antibody: CD45 Monoclonal antibody, PBS Only (Capture) 60287-2-PBS (4F3B7). 100  $\mu$ g. Concentration 1 mg/mL.

Detection antibody: CD45 Monoclonal antibody, PBS Only (Detector) 60287-3-PBS (3H1G3). 100  $\mu$ g. Concentration 1 mg/mL.

Alternative CD45 matched antibody pairs: MP50221-2, MP50221-3

Unconjugated mouse monoclonal antibody pair in PBS only storage buffer at a concentration of 1 mg/mL, ready for conjugation.

Matched antibody pairs are designed for use in a variety of assays and platforms that require matched antibody pairs.

Antibody use should be optimized for each application and assay.

## Storage

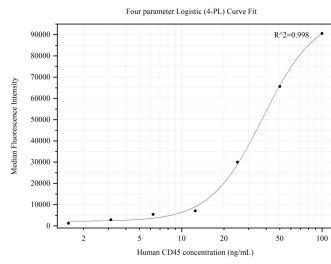
**Storage:**  
Store at -80°C.

**Storage buffer:**  
PBS only

For technical support and original validation data for this product please contact:  
T: 4006900926 E: Proteintech-CN@ptglab.com W: ptgcn.com

This product is exclusively available under Proteintech Group brand and is not available to purchase from any other manufacturer.

## Selected Validation Data



Cytometric bead array standard curve of MP50221-1, CD45 Monoclonal Matched Antibody Pair, PBS Only. Capture antibody: 60287-2-PBS. Detection antibody: 60287-3-PBS. Standard:Ag13712. Range: 1.563-100 ng/mL.