

For Research Use Only

CD45 Monoclonal Matched Antibody Pair, PBS Only



Catalog Number:MP50221-3

Capture Antibody Information

Catalog Number:
60287-4-PBS
Host:
Mouse
Isotype:
IgG1
Purification Method:
Protein G Magarose purification

Clone ID:
2H11F11
Reactivity:
human
GenBank:
BC014239
Immunogen Catalog Number:
Ag13712

Conjugate:
Unconjugated
Full name:
protein tyrosine phosphatase, receptor type, C
Gene ID:
5788

Detection Antibody Information

Catalog Number:
60287-6-PBS
Host:
Mouse
Isotype:
IgG2b
Purification Method:
Protein A Magarose purification

Clone ID:
5G12H6
Reactivity:
human
GenBank:
BC014239
Immunogen Catalog Number:
Ag13712

Conjugate:
Unconjugated
Full name:
protein tyrosine phosphatase, receptor type, C
Gene ID:
5788

Applications

Tested Applications:
Cytometric bead array

Range:
0.391-100 ng/mL (Cytometric Bead Array)

Recommended Dilutions:
It is recommended that this reagent should be titrated in each testing system to obtain optimal results.

Product Information

MP50221-3 targets CD45 in immunoassays as a matched antibody pair. Validated in Cytometric bead array.
Capture antibody: CD45 Monoclonal antibody, PBS Only (Capture) 60287-4-PBS (2H11F11). 100 µg. Concentration 1 mg/ml.
Detection antibody: CD45 Monoclonal antibody, PBS Only (Detector) 60287-6-PBS (5G12H6). 100 µg. Concentration 1 mg/ml.
Unconjugated mouse monoclonal antibody pair in PBS only storage buffer at a concentration of 1 mg/mL, ready for conjugation.
Matched antibody pairs are designed for use in a variety of assays and platforms that require matched antibody pairs.
Antibody use should be optimized for each application and assay.

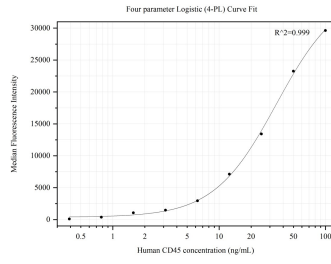
Storage

Storage:
Store at -80°C.
The product is shipped with ice packs. Upon receipt, store it immediately at -80°C
Storage buffer:
PBS only

For technical support and original validation data for this product please contact:
T: 4006900926 E: Proteintech-CN@ptglab.com W: ptgcn.com

This product is exclusively available under Proteintech Group brand and is not available to purchase from any other manufacturer.

Selected Validation Data



Cytometric bead array standard curve of MP50221-3, CD45 Monoclonal Matched Antibody Pair, PBS Only. Capture antibody: 60287-4-PBS. Detection antibody: 60287-6-PBS. Standard: Ag13712. Range: 0.391-100 ng/mL.