

CD68 Monoclonal Matched Antibody Pair, PBS Only

Catalog Number:MP50230-2

Capture Antibody Information

Catalog Number:
66231-1-PBS
Host:
Mouse
Isotype:
IgG1
Purification Method:
Protein A purification

Clone ID:
3F10E11
Reactivity:
human, mouse
GenBank:
BC015557
Immunogen Catalog Number:
Ag22815

Conjugate:
Unconjugated
Full name:
CD68 molecule
Gene ID:
968

Detection Antibody Information

Catalog Number:
66231-4-PBS
Host:
Mouse
Isotype:
IgG1
Purification Method:
Protein G Magarose purification

Clone ID:
3E11F10
Reactivity:
Human
GenBank:
BC015557
Immunogen Catalog Number:
Ag22815

Conjugate:
Unconjugated
Full name:
CD68 molecule
Gene ID:
968

Applications

Tested Applications:
Cytometric bead array

Range:
0.391-50 ng/mL (Cytometric Bead Array)

Recommended Dilutions:
It is recommended that this reagent should be titrated in each testing system to obtain optimal results.

Product Information

MP50230-2 targets CD68 in immunoassays as a matched antibody pair. Validated in Cytometric bead array.

Capture antibody: CD68 Monoclonal antibody, PBS Only (Capture) 66231-1-PBS (3F10E11). 100 µg. Concentration 1 mg/mL.

Detection antibody: CD68 Monoclonal antibody, PBS Only (Detector) 66231-4-PBS (3E11F10). 100 µg. Concentration 1 mg/mL.

Alternative CD68 matched antibody pairs: MP00015-1, MP00015-2, MP00015-3, MP50230-1

Unconjugated mouse monoclonal antibody pair in PBS only storage buffer at a concentration of 1 mg/mL, ready for conjugation.

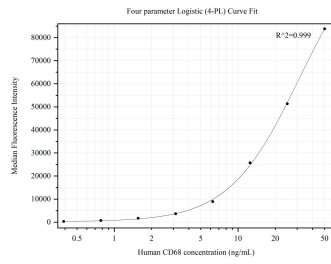
Matched antibody pairs are designed for use in a variety of assays and platforms that require matched antibody pairs.

Antibody use should be optimized for each application and assay.

Storage

Storage:
Store at -80°C.
Storage buffer:
PBS only

Selected Validation Data



Cytometric bead array standard curve of MP50230-2, CD68 Monoclonal Matched Antibody Pair, PBS Only. Capture antibody: 66231-1-PBS. Detection antibody: 66231-4-PBS. Standard:Ag22815. Range: 0.391-50 ng/mL