

For Research Use Only

# CD8A Monoclonal Matched Antibody Pair, PBS Only



Catalog Number:MP50246-1

## Capture Antibody Information

**Catalog Number:**  
66868-2-PBS  
**Host:**  
Mouse  
**Isotype:**  
IgG1  
**Purification Method:**  
Protein G purification

**Clone ID:**  
1E12B3  
**Reactivity:**  
Human  
**GenBank:**  
BC025715  
**Immunogen Catalog Number:**  
Ag11111

**Conjugate:**  
Unconjugated  
**Full name:**  
CD8a molecule  
**Gene ID:**  
925

## Detection Antibody Information

**Catalog Number:**  
66868-3-PBS  
**Host:**  
Mouse  
**Isotype:**  
IgG1  
**Purification Method:**  
Protein G Magarose purification

**Clone ID:**  
1B2A4  
**Reactivity:**  
Human  
**GenBank:**  
BC025715  
**Immunogen Catalog Number:**  
Ag11111

**Conjugate:**  
Unconjugated  
**Full name:**  
CD8a molecule  
**Gene ID:**  
925

## Applications

**Tested Applications:**  
Cytometric bead array

**Range:**  
3.125-100 ng/mL (Cytometric Bead Array)

**Recommended Dilutions:**  
It is recommended that this reagent should be titrated in each testing system to obtain optimal results.

## Product Information

MP50246-1 targets CD8A in immunoassays as a matched antibody pair. Validated in Cytometric bead array.  
Capture antibody: CD8A Monoclonal antibody, PBS Only (Capture) 66868-2-PBS (1E12B3). 100  $\mu$ g. Concentration 1 mg/ml.  
Detection antibody: CD8A Monoclonal antibody, PBS Only (Detector) 66868-3-PBS (1B2A4). 100  $\mu$ g. Concentration 1 mg/ml.  
Unconjugated mouse monoclonal antibody pair in PBS only storage buffer at a concentration of 1 mg/mL, ready for conjugation.  
Matched antibody pairs are designed for use in a variety of assays and platforms that require matched antibody pairs.  
Antibody use should be optimized for each application and assay.

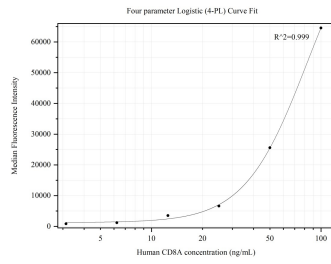
## Storage

**Storage:**  
Store at -80°C.  
**Storage buffer:**  
PBS only

For technical support and original validation data for this product please contact:  
T: 4006900926 E: Proteintech-CN@ptglab.com W: ptgcn.com

This product is exclusively available under Proteintech Group brand and is not available to purchase from any other manufacturer.

## Selected Validation Data



Cytometric bead array standard curve of MP50246-1, CD8A Monoclonal Matched Antibody Pair, PBS Only. Capture antibody: 66868-2-PBS. Detection antibody: 66868-3-PBS. Standard: Ag11111. Range: 3.125-100 ng/mL.