

For Research Use Only

# MTHFD2 Monoclonal Matched Antibody Pair, PBS Only



Catalog Number:MP50286-2

## Capture Antibody Information

**Catalog Number:**  
68524-4-PBS  
**Host:**  
Mouse  
**Isotype:**  
IgG1  
**Purification Method:**  
Protein G purification

**Clone ID:**  
2F9A8  
**Reactivity:**  
human  
**GenBank:**  
BC017054  
**Immunogen Catalog Number:**  
Ag33605

**Conjugate:**  
Unconjugated  
**Full name:**  
methylenetetrahydrofolate dehydrogenase (NADP+ dependent) 2, methenyltetrahydrofolate cyclohydrolase  
**Gene ID:**  
10797

## Detection Antibody Information

**Catalog Number:**  
68524-3-PBS  
**Host:**  
Mouse  
**Isotype:**  
IgG1  
**Purification Method:**  
Protein G purification

**Clone ID:**  
2C1D6  
**Reactivity:**  
human  
**GenBank:**  
BC017054  
**Immunogen Catalog Number:**  
Ag33605

**Conjugate:**  
Unconjugated  
**Full name:**  
methylenetetrahydrofolate dehydrogenase (NADP+ dependent) 2, methenyltetrahydrofolate cyclohydrolase  
**Gene ID:**  
10797

## Applications

**Tested Applications:**  
Cytometric bead array

**Range:**  
1.563-200 ng/mL (Cytometric Bead Array)

**Recommended Dilutions:**  
It is recommended that this reagent should be titrated in each testing system to obtain optimal results.

## Product Information

MP50286-2 targets MTHFD2 in immunoassays as a matched antibody pair. Validated in Cytometric bead array.  
Capture antibody: MTHFD2 Monoclonal antibody, PBS Only (Capture) 68524-4-PBS (2F9A8). 100 µg. Concentration 1 mg/mL.  
Detection antibody: MTHFD2 Monoclonal antibody, PBS Only (Detector) 68524-3-PBS (2C1D6). 100 µg. Concentration 1 mg/mL.  
Alternative MTHFD2 matched antibody pairs: MP50286-1  
Unconjugated mouse monoclonal antibody pair in PBS only storage buffer at a concentration of 1 mg/mL, ready for conjugation.  
Matched antibody pairs are designed for use in a variety of assays and platforms that require matched antibody pairs.  
Antibody use should be optimized for each application and assay.

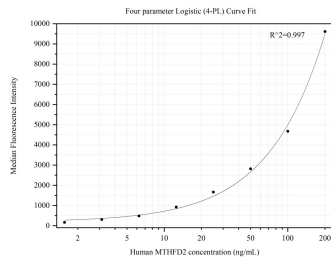
## Storage

**Storage:**  
Store at -80°C.  
**The product is shipped with ice packs. Upon receipt, store it immediately at -80°C**  
**Storage buffer:**  
PBS only

For technical support and original validation data for this product please contact:  
T: 4006900926 E: Proteintech-CN@ptglab.com W: ptgcn.com

This product is exclusively available under Proteintech Group brand and is not available to purchase from any other manufacturer.

## Selected Validation Data



Cytometric bead array standard curve of MP50286-2, MTHFD2 Monoclonal Matched Antibody Pair, PBS Only. Capture antibody: 68524-4-PBS. Detection antibody: 68524-3-PBS. Standard: Ag33605. Range: 1.563-200 ng/mL.