

For Research Use Only

# CD151 Monoclonal Matched Antibody Pair, PBS Only



Catalog Number:MP50304-1

## Capture Antibody Information

**Catalog Number:**  
66567-1-PBS  
**Host:**  
Mouse  
**Isotype:**  
IgG2b  
**Purification Method:**  
Protein A purification

**Clone ID:**  
2A8G8  
**Reactivity:**  
human  
**GenBank:**  
BC001374  
**Immunogen Catalog Number:**  
Ag25985

**Conjugate:**  
Unconjugated  
**Full name:**  
CD151 molecule (Raph blood group)  
**Gene ID:**  
977

## Detection Antibody Information

**Catalog Number:**  
66567-2-PBS  
**Host:**  
Mouse  
**Isotype:**  
IgG1  
**Purification Method:**  
Protein G purification

**Clone ID:**  
2D1G8  
**Reactivity:**  
human  
**GenBank:**  
BC001374  
**Immunogen Catalog Number:**  
Ag25985

**Conjugate:**  
Unconjugated  
**Full name:**  
CD151 molecule (Raph blood group)  
**Gene ID:**  
977

## Applications

**Tested Applications:**  
Cytometric bead array

**Range:**  
0.781-50 ng/mL (Cytometric Bead Array)

**Recommended Dilutions:**  
It is recommended that this reagent should be titrated in each testing system to obtain optimal results.

## Product Information

MP50304-1 targets CD151 in immunoassays as a matched antibody pair. Validated in Cytometric bead array.

Capture antibody: CD151 Monoclonal antibody, PBS Only (Capture) 66567-1-PBS (2A8G8). 100  $\mu$ g. Concentration 1 mg/ml.

Detection antibody: CD151 Monoclonal antibody, PBS Only (Detector) 66567-2-PBS (2D1G8). 100  $\mu$ g. Concentration 1 mg/ml.

Unconjugated mouse monoclonal antibody pair in PBS only storage buffer at a concentration of 1 mg/mL, ready for conjugation.

Matched antibody pairs are designed for use in a variety of assays and platforms that require matched antibody pairs.

Antibody use should be optimized for each application and assay.

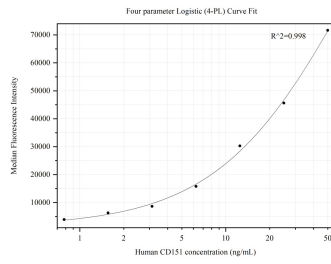
## Storage

**Storage:**  
Store at -80°C.  
**The product is shipped with ice packs. Upon receipt, store it immediately at -80°C**  
**Storage buffer:**  
PBS only

For technical support and original validation data for this product please contact:  
T: 4006900926 E: Proteintech-CN@ptglab.com W: ptgcn.com

**This product is exclusively available under Proteintech Group brand and is not available to purchase from any other manufacturer.**

## Selected Validation Data



Cytometric bead array standard curve of MP50304-1, CD151 Monoclonal Matched Antibody Pair, PBS Only. Capture antibody: 66567-1-PBS. Detection antibody: 66567-2-PBS. Standard: Ag25985. Range: 0.781-50 ng/mL