

# CD163 Monoclonal Matched Antibody Pair, PBS Only

Catalog Number:MP50318-4

## Capture Antibody Information

Catalog Number:  
68218-4-PBS

Host:  
Mouse

Isotype:  
IgG1

Purification Method:  
Protein G Magarose purification

Clone ID:  
2A12E7

Reactivity:  
human

GenBank:  
BC051281

Immunogen Catalog Number:  
Ag26721

Conjugate:  
Unconjugated

Full name:  
CD163 molecule

Gene ID:  
9332

## Detection Antibody Information

Catalog Number:  
68218-5-PBS

Host:  
Mouse

Isotype:  
IgG1

Purification Method:  
Protein A purification

Clone ID:  
2B6A6

Reactivity:  
human

GenBank:  
BC051281

Immunogen Catalog Number:  
Ag26721

Conjugate:  
Unconjugated

Full name:  
CD163 molecule

Gene ID:  
9332

## Applications

Tested Applications:  
Cytometric bead array

Range:  
3.125-200 ng/mL (Cytometric Bead Array)

Recommended Dilutions:  
It is recommended that this reagent should be titrated in each testing system to obtain optimal results.

## Product Information

MP50318-4 targets CD163 in immunoassays as a matched antibody pair. Validated in Cytometric bead array.

Capture antibody: CD163 Monoclonal antibody, PBS Only (Capture) 68218-4-PBS (2A12E7). 100 µg. Concentration 1 mg/ml.

Detection antibody: CD163 Monoclonal antibody, PBS Only (Capture/Detector) 68218-5-PBS (2B6A6). 100 µg. Concentration 1 mg/ml.

Alternative CD163 matched antibody pairs: MP00326-1, MP00326-2, MP00326-3, MP50318-1, MP50318-2, MP50318-3

Unconjugated mouse monoclonal antibody pair in PBS only storage buffer at a concentration of 1 mg/mL, ready for conjugation.

Matched antibody pairs are designed for use in a variety of assays and platforms that require matched antibody pairs.

Antibody use should be optimized for each application and assay.

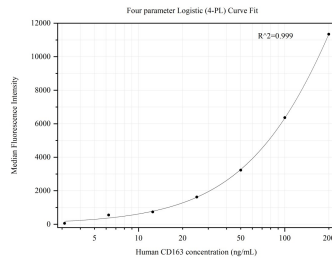
## Storage

Storage:  
Store at -80°C.

The product is shipped with ice packs. Upon receipt, store it immediately at -80°C

Storage buffer:  
PBS only

## Selected Validation Data



Cytometric bead array standard curve of MP50318-4, CD163 Monoclonal Matched Antibody Pair, PBS Only. Capture antibody: 68218-4-PBS. Detection antibody: 68218-5-PBS. Standard: Ag26721. Range: 3.125-200 ng/mL.