

For Research Use Only

CD31 Monoclonal Matched Antibody Pair, PBS Only



Catalog Number:MP50319-1

Capture Antibody Information

Catalog Number:
66065-3-PBS

Host:
Mouse

Isotype:
IgG1

Purification Method:
Protein G Magarose purification

Clone ID:
4B9C12

Reactivity:
human

GenBank:
BC022512

Immunogen Catalog Number:
Ag19730

Conjugate:
Unconjugated

Full name:
platelet/endothelial cell adhesion molecule

Gene ID:
5175

Detection Antibody Information

Catalog Number:
66065-4-PBS

Host:
Mouse

Isotype:
IgG2b

Purification Method:
Protein A purification

Clone ID:
2B1G10

Reactivity:
human

GenBank:
BC022512

Immunogen Catalog Number:
Ag1787

Conjugate:
Unconjugated

Full name:
platelet/endothelial cell adhesion molecule

Gene ID:
5175

Applications

Tested Applications:
Cytometric bead array

Range:
0.781-200 ng/mL (Cytometric Bead Array)

Recommended Dilutions:
It is recommended that this reagent should be titrated in each testing system to obtain optimal results.

Product Information

MP50319-1 targets CD31 in immunoassays as a matched antibody pair. Validated in Cytometric bead array.

Capture antibody: CD31 Monoclonal antibody, PBS Only (Capture) 66065-3-PBS (4B9C12). 100 µg. Concentration 1 mg/ml.

Detection antibody: CD31 Monoclonal antibody, PBS Only (Detector) 66065-4-PBS (2B1G10). 100 µg. Concentration 1 mg/ml.

Alternative CD31 matched antibody pairs: MP50319-2, MP50319-3

Unconjugated mouse monoclonal antibody pair in PBS only storage buffer at a concentration of 1 mg/mL, ready for conjugation.

Matched antibody pairs are designed for use in a variety of assays and platforms that require matched antibody pairs.

Antibody use should be optimized for each application and assay.

Storage

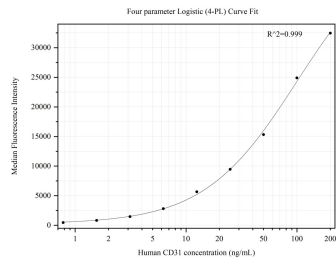
Storage:
Store at -80°C.
The product is shipped with ice packs. Upon receipt, store it immediately at -80°C

Storage buffer:
PBS only

For technical support and original validation data for this product please contact:
T: 4006900926 E: Proteintech-CN@ptglab.com W: ptgcn.com

This product is exclusively available under Proteintech Group brand and is not available to purchase from any other manufacturer.

Selected Validation Data



Cytometric bead array standard curve of MP50319-1, CD31 Monoclonal Matched Antibody Pair, PBS Only. Capture antibody: 66065-3-PBS. Detection antibody: 66065-4-PBS. Standard:Ag1787. Range: 0.781-200 ng/mL.