

For Research Use Only

CD31 Monoclonal Matched Antibody Pair, PBS Only



Catalog Number:MP50319-2

Capture Antibody Information

Catalog Number:
66065-2-PBS
Host:
Mouse
Isotype:
IgG1
Purification Method:
Protein G purification

Clone ID:
3F8E2
Reactivity:
human
GenBank:
BC022512
Immunogen Catalog Number:
Ag19730

Conjugate:
Unconjugated
Full name:
platelet/endothelial cell adhesion molecule
Gene ID:
5175

Detection Antibody Information

Catalog Number:
66065-5-PBS
Host:
Mouse
Isotype:
IgG1
Purification Method:
Protein G Magarose purification

Clone ID:
1C5
Reactivity:
human
GenBank:
BC022512
Immunogen Catalog Number:
Ag1787

Conjugate:
Unconjugated
Full name:
platelet/endothelial cell adhesion molecule
Gene ID:
5175

Applications

Tested Applications:
Cytometric bead array

Range:
3.125-200 ng/mL (Cytometric Bead Array)

Recommended Dilutions:
It is recommended that this reagent should be titrated in each testing system to obtain optimal results.

Product Information

MP50319-2 targets CD31 in immunoassays as a matched antibody pair. Validated in Cytometric bead array.
Capture antibody: CD31 Monoclonal antibody, PBS Only (Capture) 66065-2-PBS (3F8E2). 100 µg. Concentration 1 mg/ml.
Detection antibody: CD31 Monoclonal antibody, PBS Only (Detector) 66065-5-PBS (1C5). 100 µg. Concentration 1 mg/ml.
Alternative CD31 matched antibody pairs: MP50319-1, MP50319-3
Unconjugated mouse monoclonal antibody pair in PBS only storage buffer at a concentration of 1 mg/mL, ready for conjugation.
Matched antibody pairs are designed for use in a variety of assays and platforms that require matched antibody pairs.
Antibody use should be optimized for each application and assay.

Storage

Storage:
Store at -80°C.
The product is shipped with ice packs. Upon receipt, store it immediately at -80°C
Storage buffer:
PBS only

For technical support and original validation data for this product please contact:

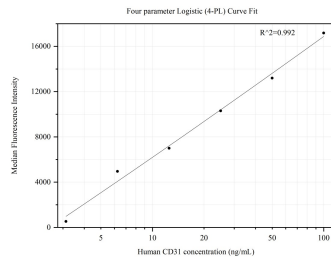
T: 4006900926

E: Proteintech-CN@ptglab.com

W: ptgcn.com

This product is exclusively available under Proteintech Group brand and is not available to purchase from any other manufacturer.

Selected Validation Data



Cytometric bead array standard curve of MP50319-2, CD31 Monoclonal Matched Antibody Pair, PBS Only. Capture antibody: 66065-2-PBS. Detection antibody: 66065-5-PBS. Standard:Ag1787. Range: 3.125-200 ng/mL.