

# CD31 Monoclonal Matched Antibody Pair, PBS Only

Catalog Number:MP50319-3

## Capture Antibody Information

**Catalog Number:**  
66065-3-PBS

**Host:**  
Mouse

**Isotype:**  
IgG1

**Purification Method:**  
Protein G Magarose purification

**Clone ID:**  
4B9C12

**Reactivity:**  
human

**GenBank:**  
BC022512

**Immunogen Catalog Number:**  
Ag19730

**Conjugate:**  
Unconjugated

**Full name:**  
platelet/endothelial cell adhesion molecule

**Gene ID:**  
5175

## Detection Antibody Information

**Catalog Number:**  
66065-6-PBS

**Host:**  
Mouse

**Isotype:**  
IgG1

**Purification Method:**  
Protein G Magarose purification

**Clone ID:**  
3D7E11

**Reactivity:**  
human

**GenBank:**  
BC022512

**Immunogen Catalog Number:**  
Ag1787

**Conjugate:**  
Unconjugated

**Full name:**  
platelet/endothelial cell adhesion molecule

**Gene ID:**  
5175

## Applications

**Tested Applications:**  
Cytometric bead array

**Range:**  
1.563-200 ng/mL (Cytometric Bead Array)

**Recommended Dilutions:**  
It is recommended that this reagent should be titrated in each testing system to obtain optimal results.

## Product Information

MP50319-3 targets CD31 in immunoassays as a matched antibody pair. Validated in Cytometric bead array.

Capture antibody: CD31 Monoclonal antibody, PBS Only (Capture) 66065-3-PBS (4B9C12). 100 µg. Concentration 1 mg/ml.

Detection antibody: CD31 Monoclonal antibody, PBS Only (Detector) 66065-6-PBS (3D7E11). 100 µg. Concentration 1 mg/ml.

Alternative CD31 matched antibody pairs: MP50319-1, MP50319-2

Unconjugated mouse monoclonal antibody pair in PBS only storage buffer at a concentration of 1 mg/mL, ready for conjugation.

Matched antibody pairs are designed for use in a variety of assays and platforms that require matched antibody pairs.

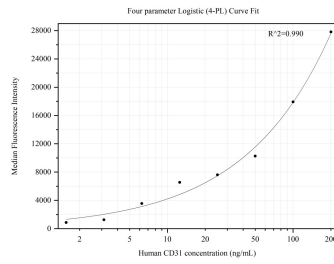
Antibody use should be optimized for each application and assay.

## Storage

**Storage:**  
Store at -80°C.  
**The product is shipped with ice packs. Upon receipt, store it immediately at -80°C**

**Storage buffer:**  
PBS only

## Selected Validation Data



Cytometric bead array standard curve of MP50319-3, CD31 Monoclonal Matched Antibody Pair, PBS Only. Capture antibody: 66065-3-PBS. Detection antibody: 66065-6-PBS. Standard: Ag1787. Range: 1.563-200 ng/mL.