

For Research Use Only

GYP A Monoclonal Matched Antibody Pair, PBS Only



Catalog Number:MP50422-1

Capture Antibody Information

Catalog Number:
66778-2-PBS

Host:
Mouse

Isotype:
IgG1

Purification Method:
Protein G Magarose purification

Clone ID:
1A5B9

Reactivity:
human

GenBank:
BC005319

Immunogen Catalog Number:
Ag8635

Conjugate:
Unconjugated

Full name:
glycophorin A (MNS blood group)

Gene ID:
2993

Detection Antibody Information

Catalog Number:
66778-3-PBS

Host:
Mouse

Isotype:
IgG2b

Purification Method:
Protein A purification

Clone ID:
2A9G12

Reactivity:
human

GenBank:
BC005319

Immunogen Catalog Number:
Ag8635

Conjugate:
Unconjugated

Full name:
glycophorin A (MNS blood group)

Gene ID:
2993

Applications

Tested Applications:
Cytometric bead array

Range:
0.391-100 ng/mL (Cytometric Bead Array)

Recommended Dilutions:
It is recommended that this reagent should be titrated in each testing system to obtain optimal results.

Product Information

MP50422-1 targets GYP A in immunoassays as a matched antibody pair. Validated in Cytometric bead array.

Capture antibody: GYP A Monoclonal antibody, PBS Only (Capture) 66778-2-PBS (1A5B9). 100 μ g. Concentration 1 mg/mL.

Detection antibody: GYP A Monoclonal antibody, PBS Only (Detector) 66778-3-PBS (2A9G12). 100 μ g. Concentration 1 mg/mL.

Alternative GYP A matched antibody pairs: MP50422-2

Unconjugated mouse monoclonal antibody pair in PBS only storage buffer at a concentration of 1 mg/mL, ready for conjugation.

Matched antibody pairs are designed for use in a variety of assays and platforms that require matched antibody pairs.

Antibody use should be optimized for each application and assay.

Storage

Storage:
Store at -80°C.

The product is shipped with ice packs. Upon receipt, store it immediately at -80°C

Storage buffer:
PBS only

For technical support and original validation data for this product please contact:

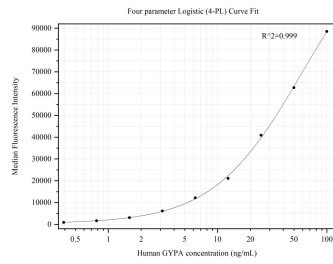
T: 4006900926

E: Proteintech-CN@ptglab.com

W: ptgcn.com

This product is exclusively available under Proteintech Group brand and is not available to purchase from any other manufacturer.

Selected Validation Data



Cytometric bead array standard curve of MP50422-1, GYPA Monoclonal Matched Antibody Pair, PBS Only. Capture antibody: 66778-2-PBS. Detection antibody: 66778-3-PBS. Standard: Ag8635. Range: 0.391-100 ng/mL.