

For Research Use Only

# IL4l1 Monoclonal Matched Antibody Pair, PBS Only



Catalog Number:MP50424-1

## Capture Antibody Information

<b>Catalog Number:</b> 68955-1-PBS	<b>Clone ID:</b> 2G5F12	<b>Conjugate:</b> Unconjugated
<b>Host:</b> Mouse	<b>Reactivity:</b> human	<b>Full name:</b> interleukin 4 induced 1
<b>Isotype:</b> IgG1	<b>GenBank:</b> BC131625	<b>Gene ID:</b> 259307
<b>Purification Method:</b> Protein G purification	<b>Immunogen Catalog Number:</b> Ag19136	

## Detection Antibody Information

<b>Catalog Number:</b> 68955-2-PBS	<b>Clone ID:</b> 2E7E9	<b>Conjugate:</b> Unconjugated
<b>Host:</b> Mouse	<b>Reactivity:</b> human	<b>Full name:</b> interleukin 4 induced 1
<b>Isotype:</b> IgG1	<b>GenBank:</b> BC131625	<b>Gene ID:</b> 259307
<b>Purification Method:</b> Protein G purification	<b>Immunogen Catalog Number:</b> Ag19136	

## Applications

<b>Tested Applications:</b> Sandwich ELISA	<b>Range:</b> 125-8000 pg/mL (Sandwich ELISA)	<b>Recommended Dilutions:</b> It is recommended that this reagent should be titrated in each testing system to obtain optimal results.
---	--	---

## Product Information

MP50424-1 targets IL4l1 in immunoassays as a matched antibody pair. Validated in Sandwich ELISA.

Capture antibody: IL4l1 Monoclonal antibody, PBS Only (Capture) 68955-1-PBS (2G5F12). 100 µg. Concentration 1 mg/mL.

Detection antibody: IL4l1 Monoclonal antibody, PBS Only (Detector) 68955-2-PBS (2E7E9). 100 µg. Concentration 1 mg/mL.

Unconjugated mouse monoclonal antibody pair in PBS only storage buffer at a concentration of 1 mg/mL, ready for conjugation.

Matched antibody pairs are designed for use in a variety of assays and platforms that require matched antibody pairs.

Antibody use should be optimized for each application and assay.

## Storage

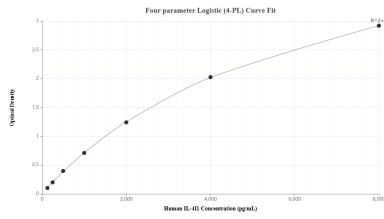
**Storage:**  
Store at -80°C.  
**The product is shipped with ice packs. Upon receipt, store it immediately at -80°C**

**Storage buffer:**  
PBS only

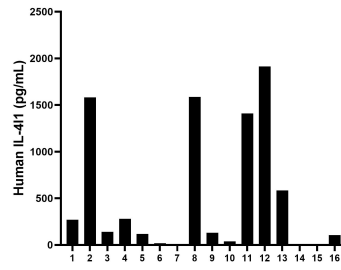
For technical support and original validation data for this product please contact:  
T: 4006900926 E: Proteintech-CN@ptglab.com W: ptgcn.com

**This product is exclusively available under Proteintech Group brand and is not available to purchase from any other manufacturer.**

## Selected Validation Data



Sandwich ELISA standard curve of MP50424-1, Human IL41 Recombinant Matched Antibody Pair - PBS only. 68955-1-PBS was coated to a plate as the capture antibody and incubated with serial dilutions of standard Ag19136. 68955-2-PBS was HRP conjugated as the detection antibody. Range: 125-8000 pg/mL



Serum of sixteen individual healthy human donors was measured. The human IL41 concentration of detected samples was determined to be 629.0 pg/mL with a range of ND - 1913.6 pg/mL.