

For Research Use Only

# IMMP2L Monoclonal Matched Antibody Pair, PBS Only



Catalog Number:MP50430-2

## Capture Antibody Information

Catalog Number:  
68972-2-PBS

Host:  
Mouse

Isotype:  
IgG3

Purification Method:  
Protein A Magarose purification

Clone ID:  
1F4B4

Reactivity:  
human

GenBank:  
BC008497

Immunogen Catalog Number:  
Ag8752

Conjugate:  
Unconjugated

Full name:  
IMP2 inner mitochondrial membrane  
peptidase-like (*S. cerevisiae*)

Gene ID:  
83943

## Detection Antibody Information

Catalog Number:  
68972-3-PBS

Host:  
Mouse

Isotype:  
IgG1

Purification Method:  
Protein G Magarose purification

Clone ID:  
1H7D6

Reactivity:  
human

GenBank:  
BC008497

Immunogen Catalog Number:  
Ag8752

Conjugate:  
Unconjugated

Full name:  
IMP2 inner mitochondrial membrane  
peptidase-like (*S. cerevisiae*)

Gene ID:  
83943

## Applications

Tested Applications:  
Cytometric bead array

Range:  
0.098-50 ng/mL (Cytometric Bead  
Array)

Recommended Dilutions:  
It is recommended that this reagent  
should be titrated in each testing  
system to obtain optimal results.

## Product Information

MP50430-2 targets IMMP2L in immunoassays as a matched antibody pair. Validated in Cytometric bead array.

Capture antibody: IMMP2L Monoclonal antibody, PBS Only (Capture/Detector) 68972-2-PBS (1F4B4). 100  $\mu$ g. Concentration 1 mg/ml.

Detection antibody: IMMP2L Monoclonal antibody, PBS Only (Detector) 68972-3-PBS (1H7D6). 100  $\mu$ g. Concentration 1 mg/ml.

Alternative IMMP2L matched antibody pairs: MP50430-1

Unconjugated mouse monoclonal antibody pair in PBS only storage buffer at a concentration of 1 mg/mL, ready for conjugation.

Matched antibody pairs are designed for use in a variety of assays and platforms that require matched antibody pairs.

Antibody use should be optimized for each application and assay.

## Storage

Storage:  
Store at -80°C.

The product is shipped with ice packs. Upon receipt, store it immediately at -80°C

Storage buffer:  
PBS only

For technical support and original validation data for this product please contact:

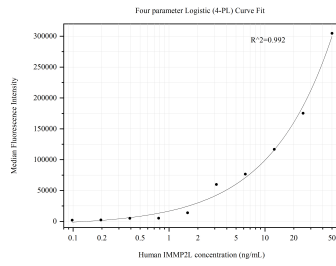
T: 4006900926

E: Proteintech-CN@ptglab.com

W: ptgcn.com

This product is exclusively available under Proteintech Group brand and is not available to purchase from any other manufacturer.

## Selected Validation Data



Cytometric bead array standard curve of MP50430-2, IMMP2L Monoclonal Matched Antibody Pair, PBS Only. Capture antibody: 68972-2-PBS. Detection antibody: 68972-3-PBS. Standard: Ag8752. Range: 0.098-50 ng/mL