

For Research Use Only

# CYP24A1 Monoclonal Matched Antibody Pair, PBS Only



Catalog Number:MP50481-1

## Capture Antibody Information

**Catalog Number:**  
67887-2-PBS

**Host:**  
Mouse

**Isotype:**  
IgG1

**Purification Method:**  
Protein G Magarose purification

**Clone ID:**  
2C6E4

**Reactivity:**  
human

**GenBank:**  
BC109083

**Immunogen Catalog Number:**  
Ag17089

**Conjugate:**  
Unconjugated

**Full name:**  
cytochrome P450, family 24, subfamily A, polypeptide 1

**Gene ID:**  
1591

## Detection Antibody Information

**Catalog Number:**  
67887-3-PBS

**Host:**  
Mouse

**Isotype:**  
IgG1

**Purification Method:**  
Protein G Magarose purification

**Clone ID:**  
2C1H7

**Reactivity:**  
human

**GenBank:**  
BC109083

**Immunogen Catalog Number:**  
Ag17089

**Conjugate:**  
Unconjugated

**Full name:**  
cytochrome P450, family 24, subfamily A, polypeptide 1

**Gene ID:**  
1591

## Applications

**Tested Applications:**  
Cytometric bead array

**Range:**  
1.563-100 ng/mL (Cytometric Bead Array)

**Recommended Dilutions:**  
It is recommended that this reagent should be titrated in each testing system to obtain optimal results.

## Product Information

MP50481-1 targets CYP24A1 in immunoassays as a matched antibody pair. Validated in Cytometric bead array.

Capture antibody: CYP24A1 Monoclonal antibody, PBS Only (Capture) 67887-2-PBS (2C6E4). 100  $\mu$ g. Concentration 1 mg/ml.

Detection antibody: CYP24A1 Monoclonal antibody, PBS Only (Capture/Detector) 67887-3-PBS (2C1H7). 100  $\mu$ g. Concentration 1 mg/ml.

Alternative CYP24A1 matched antibody pairs: MP50481-2, MP50481-3

Unconjugated mouse monoclonal antibody pair in PBS only storage buffer at a concentration of 1 mg/mL, ready for conjugation.

Matched antibody pairs are designed for use in a variety of assays and platforms that require matched antibody pairs.

Antibody use should be optimized for each application and assay.

## Storage

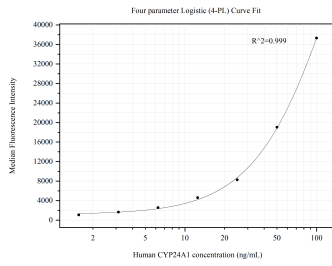
**Storage:**  
Store at -80°C.  
**The product is shipped with ice packs. Upon receipt, store it immediately at -80°C**

**Storage buffer:**  
PBS only

For technical support and original validation data for this product please contact:  
T: 4006900926 E: Proteintech-CN@ptglab.com W: ptgcn.com

**This product is exclusively available under Proteintech Group brand and is not available to purchase from any other manufacturer.**

## Selected Validation Data



Cytometric bead array standard curve of MP50481-1, CYP24A1 Monoclonal Matched Antibody Pair, PBS Only. Capture antibody: 67887-2-PBS. Detection antibody: 67887-3-PBS. Standard: Ag17089. Range: 1.563-100 ng/mL.