

For Research Use Only

# CYP24A1 Monoclonal Matched Antibody Pair, PBS Only



Catalog Number:MP50481-3

## Capture Antibody Information

<b>Catalog Number:</b> 67887-3-PBS	<b>Clone ID:</b> 2C1H7	<b>Conjugate:</b> Unconjugated
<b>Host:</b> Mouse	<b>Reactivity:</b> human	<b>Full name:</b> cytochrome P450, family 24, subfamily A, polypeptide 1
<b>Isotype:</b> IgG1	<b>GenBank:</b> BC109083	<b>Gene ID:</b> 1591
<b>Purification Method:</b> Protein G Magarose purification	<b>Immunogen Catalog Number:</b> Ag17089	

## Detection Antibody Information

<b>Catalog Number:</b> 67887-4-PBS	<b>Clone ID:</b> 2F10F11	<b>Conjugate:</b> Unconjugated
<b>Host:</b> Mouse	<b>Reactivity:</b> human	<b>Full name:</b> cytochrome P450, family 24, subfamily A, polypeptide 1
<b>Isotype:</b> IgG1	<b>GenBank:</b> BC109083	<b>Gene ID:</b> 1591
<b>Purification Method:</b> Protein G Magarose purification	<b>Immunogen Catalog Number:</b> Ag17089	

## Applications

<b>Tested Applications:</b> Cytometric bead array	<b>Range:</b> 1.563-100 ng/mL (Cytometric Bead Array)	<b>Recommended Dilutions:</b> It is recommended that this reagent should be titrated in each testing system to obtain optimal results.
--	--	---

## Product Information

MP50481-3 targets CYP24A1 in immunoassays as a matched antibody pair. Validated in Cytometric bead array.

Capture antibody: CYP24A1 Monoclonal antibody, PBS Only (Capture/Detector) 67887-3-PBS (2C1H7). 100 µg. Concentration 1 mg/ml.

Detection antibody: CYP24A1 Monoclonal antibody, PBS Only (Detector) 67887-4-PBS (2F10F11). 100 µg. Concentration 1 mg/ml.

Alternative CYP24A1 matched antibody pairs: MP50481-1, MP50481-2

Unconjugated mouse monoclonal antibody pair in PBS only storage buffer at a concentration of 1 mg/mL, ready for conjugation.

Matched antibody pairs are designed for use in a variety of assays and platforms that require matched antibody pairs.

Antibody use should be optimized for each application and assay.

## Storage

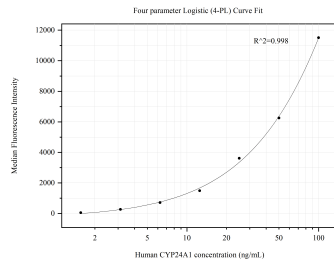
**Storage:**  
Store at -80°C.  
**The product is shipped with ice packs. Upon receipt, store it immediately at -80°C**

**Storage buffer:**  
PBS only

For technical support and original validation data for this product please contact:  
T: 4006900926 E: Proteintech-CN@ptglab.com W: ptgcn.com

**This product is exclusively available under Proteintech Group brand and is not available to purchase from any other manufacturer.**

## Selected Validation Data



Cytometric bead array standard curve of MP50481-3, CYP24A1 Monoclonal Matched Antibody Pair, PBS Only. Capture antibody: 67887-3-PBS. Detection antibody: 67887-4-PBS. Standard: Ag17089. Range: 1.563-100 ng/mL.