

For Research Use Only

ALDH1L2 Monoclonal Matched Antibody Pair, PBS Only



Catalog Number:MP50511-1

Capture Antibody Information

Catalog Number:
60405-1-PBS

Host:
Mouse

Isotype:
IgG1

Purification Method:
Protein G Magarose purification

Clone ID:
1F11C3

Reactivity:
human

GenBank:
BC103935

Immunogen Catalog Number:
Ag17340

Conjugate:
Unconjugated

Full name:
aldehyde dehydrogenase 1 family,
member L2

Gene ID:
160428

Detection Antibody Information

Catalog Number:
60405-2-PBS

Host:
Mouse

Isotype:
IgG2b

Purification Method:
Protein A Magarose purification

Clone ID:
1F3H1

Reactivity:
human

GenBank:
BC103935

Immunogen Catalog Number:
Ag17340

Conjugate:
Unconjugated

Full name:
aldehyde dehydrogenase 1 family,
member L2

Gene ID:
160428

Applications

Tested Applications:
Cytometric bead array

Range:
0.391-12.5 ng/mL (Cytometric Bead
Array)

Recommended Dilutions:
It is recommended that this reagent
should be titrated in each testing
system to obtain optimal results.

Product Information

MP50511-1 targets ALDH1L2 in immunoassays as a matched antibody pair. Validated in Cytometric bead array.

Capture antibody: ALDH1L2 Monoclonal antibody, PBS Only (Capture) 60405-1-PBS (1F11C3). 100 μ g. Concentration 1 mg/ml.

Detection antibody: ALDH1L2 Monoclonal antibody, PBS Only (Detector) 60405-2-PBS (1F3H1). 100 μ g. Concentration 1 mg/ml.

Alternative ALDH1L2 matched antibody pairs: MP50511-2, MP50511-3, MP50511-4

Unconjugated mouse monoclonal antibody pair in PBS only storage buffer at a concentration of 1 mg/mL, ready for conjugation.

Matched antibody pairs are designed for use in a variety of assays and platforms that require matched antibody pairs.

Antibody use should be optimized for each application and assay.

Storage

Storage:
Store at -80°C.

The product is shipped with ice packs. Upon receipt, store it immediately at -80°C

Storage buffer:
PBS only

For technical support and original validation data for this product please contact:

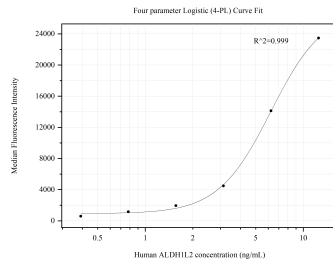
T: 4006900926

E: Proteintech-CN@ptglab.com

W: ptgcn.com

This product is exclusively available under Proteintech Group brand and is not available to purchase from any other manufacturer.

Selected Validation Data



Cytometric bead array standard curve of MP50511-1, ALDH1L2 Monoclonal Matched Antibody Pair, PBS Only. Capture antibody: 60405-1-PBS. Detection antibody: 60405-2-PBS. Standard: Ag17340. Range: 0.391-12.5 ng/mL