

For Research Use Only

# ALDH1L2 Monoclonal Matched Antibody Pair, PBS Only



Catalog Number:MP50511-2

## Capture Antibody Information

Catalog Number:  
60405-3-PBS

Host:  
Mouse

Isotype:  
IgG1

Purification Method:  
Protein G Magarose purification

Clone ID:  
1G3F6

Reactivity:  
human

GenBank:  
BC103935

Immunogen Catalog Number:  
Ag17340

Conjugate:  
Unconjugated

Full name:  
aldehyde dehydrogenase 1 family,  
member L2

Gene ID:  
160428

## Detection Antibody Information

Catalog Number:  
60405-2-PBS

Host:  
Mouse

Isotype:  
IgG2b

Purification Method:  
Protein A Magarose purification

Clone ID:  
1F3H1

Reactivity:  
human

GenBank:  
BC103935

Immunogen Catalog Number:  
Ag17340

Conjugate:  
Unconjugated

Full name:  
aldehyde dehydrogenase 1 family,  
member L2

Gene ID:  
160428

## Applications

Tested Applications:  
Cytometric bead array

Range:  
0.391-25 ng/mL (Cytometric Bead  
Array)

Recommended Dilutions:  
It is recommended that this reagent  
should be titrated in each testing  
system to obtain optimal results.

## Product Information

MP50511-2 targets ALDH1L2 in immunoassays as a matched antibody pair. Validated in Cytometric bead array.

Capture antibody: ALDH1L2 Monoclonal antibody, PBS Only (Capture) 60405-3-PBS (1G3F6). 100  $\mu$ g. Concentration 1 mg/ml.

Detection antibody: ALDH1L2 Monoclonal antibody, PBS Only (Detector) 60405-2-PBS (1F3H1). 100  $\mu$ g. Concentration 1 mg/ml.

Alternative ALDH1L2 matched antibody pairs: MP50511-1, MP50511-3, MP50511-4

Unconjugated mouse monoclonal antibody pair in PBS only storage buffer at a concentration of 1 mg/mL, ready for conjugation.

Matched antibody pairs are designed for use in a variety of assays and platforms that require matched antibody pairs.

Antibody use should be optimized for each application and assay.

## Storage

Storage:  
Store at -80°C.

The product is shipped with ice packs. Upon receipt, store it immediately at -80°C

Storage buffer:  
PBS only

For technical support and original validation data for this product please contact:

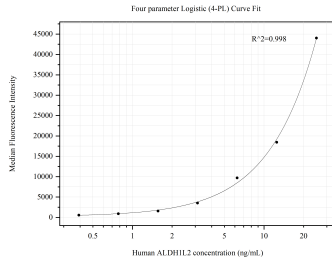
T: 4006900926

E: [Proteintech-CN@ptglab.com](mailto:Proteintech-CN@ptglab.com)

W: [ptgcn.com](http://ptgcn.com)

This product is exclusively available under Proteintech Group brand and is not available to purchase from any other manufacturer.

## Selected Validation Data



Cytometric bead array standard curve of MP50511-2, ALDH1L2 Monoclonal Matched Antibody Pair, PBS Only. Capture antibody: 60405-3-PBS. Detection antibody: 60405-2-PBS. Standard: Ag17340. Range: 0.391-25 ng/mL