

# ATP1A2 Monoclonal Matched Antibody Pair, PBS Only

Catalog Number:MP50523-2

## Capture Antibody Information

**Catalog Number:**  
68505-2-PBS  
**Host:**  
Mouse  
**Isotype:**  
IgG1  
**Purification Method:**  
Protein G purification

**Clone ID:**  
1F5C2  
**Reactivity:**  
human  
**GenBank:**  
BC052271  
**Immunogen Catalog Number:**  
Ag10489

**Conjugate:**  
Unconjugated  
**Full name:**  
ATPase, Na<sup>+</sup>/K<sup>+</sup> transporting, alpha 2 (+) polypeptide  
**Gene ID:**  
477

## Detection Antibody Information

**Catalog Number:**  
68504-1-PBS  
**Host:**  
Mouse  
**Isotype:**  
IgG2a  
**Purification Method:**  
Protein A purification

**Clone ID:**  
3D1C2  
**Reactivity:**  
human  
**GenBank:**  
BC052271  
**Immunogen Catalog Number:**  
Ag10489

**Conjugate:**  
Unconjugated  
**Full name:**  
ATPase, Na<sup>+</sup>/K<sup>+</sup> transporting, alpha 2 (+) polypeptide  
**Gene ID:**  
477

## Applications

**Tested Applications:**  
Cytometric bead array

**Range:**  
0.781-50 ng/mL (Cytometric Bead Array)

**Recommended Dilutions:**  
It is recommended that this reagent should be titrated in each testing system to obtain optimal results.

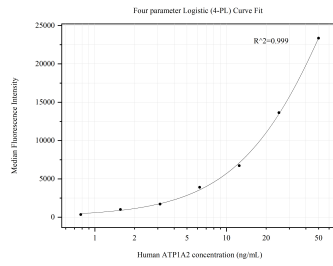
## Product Information

MP50523-2 targets ATP1A2 in immunoassays as a matched antibody pair. Validated in Cytometric bead array.  
Capture antibody: ATP1A2 Monoclonal antibody, PBS Only (Capture) 68505-2-PBS (1F5C2). 100 µg. Concentration 1 mg/mL.  
Detection antibody: ATP1A2 Monoclonal antibody, PBS Only (Detector) 68504-1-PBS (3D1C2). 100 µg. Concentration 1 mg/mL.  
Alternative ATP1A2 matched antibody pairs: MP50523-1  
Unconjugated mouse monoclonal antibody pair in PBS only storage buffer at a concentration of 1 mg/mL, ready for conjugation.  
Matched antibody pairs are designed for use in a variety of assays and platforms that require matched antibody pairs.  
Antibody use should be optimized for each application and assay.

## Storage

**Storage:**  
Store at -80°C.  
**The product is shipped with ice packs. Upon receipt, store it immediately at -80°C**  
**Storage buffer:**  
PBS only

## Selected Validation Data



Cytometric bead array standard curve of MP50523-2, ATP1A2 Monoclonal Matched Antibody Pair, PBS Only. Capture antibody: 68505-2-PBS. Detection antibody: 68504-1-PBS. Standard: Ag10489. Range: 0.781-50 ng/mL