

For Research Use Only

SLC4A1 Monoclonal Matched Antibody Pair, PBS Only



Catalog Number:MP50547-2

Capture Antibody Information

Catalog Number:
66984-4-PBS
Host:
Mouse
Isotype:
IgG1
Purification Method:
Protein G purification

Clone ID:
4G3C11
Reactivity:
human
GenBank:
BC101570
Immunogen Catalog Number:
Ag28058

Conjugate:
Unconjugated
Full name:
solute carrier family 4, anion exchanger, member 1 (erythrocyte membrane protein band 3, Diego blood group)
Gene ID:
6521

Detection Antibody Information

Catalog Number:
66984-5-PBS
Host:
Mouse
Isotype:
IgG1
Purification Method:
Protein G Magarose purification

Clone ID:
5A7E8
Reactivity:
human
GenBank:
BC101570
Immunogen Catalog Number:
Ag28058

Conjugate:
Unconjugated
Full name:
solute carrier family 4, anion exchanger, member 1 (erythrocyte membrane protein band 3, Diego blood group)
Gene ID:
6521

Applications

Tested Applications:
Cytometric bead array

Range:
1.563-100 ng/mL (Cytometric Bead Array)

Recommended Dilutions:
It is recommended that this reagent should be titrated in each testing system to obtain optimal results.

Product Information

MP50547-2 targets SLC4A1 in immunoassays as a matched antibody pair. Validated in Cytometric bead array.
Capture antibody: SLC4A1 Monoclonal antibody, PBS Only (Capture) 66984-4-PBS (4G3C11). 100 µg. Concentration 1 mg/mL.
Detection antibody: SLC4A1 Monoclonal antibody, PBS Only (Detector) 66984-5-PBS (5A7E8). 100 µg. Concentration 1 mg/mL.
Alternative SLC4A1 matched antibody pairs: MP50547-1, MP50547-3
Unconjugated mouse monoclonal antibody pair in PBS only storage buffer at a concentration of 1 mg/mL, ready for conjugation.
Matched antibody pairs are designed for use in a variety of assays and platforms that require matched antibody pairs.
Antibody use should be optimized for each application and assay.

Storage

Storage:
Store at -80°C.
The product is shipped with ice packs. Upon receipt, store it immediately at -80°C
Storage buffer:
PBS only

For technical support and original validation data for this product please contact:

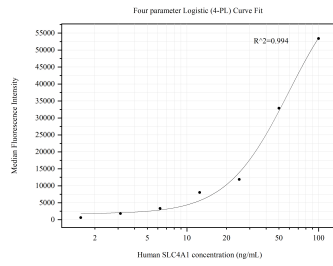
T: 4006900926

E: Proteintech-CN@ptglab.com

W: ptgcn.com

This product is exclusively available under Proteintech Group brand and is not available to purchase from any other manufacturer.

Selected Validation Data



Cytometric bead array standard curve of MP50547-2, SLC4A1 Monoclonal Matched Antibody Pair, PBS Only. Capture antibody: 66984-4-PBS. Detection antibody: 66984-5-PBS. Standard: Ag28058. Range: 1.563-100 ng/mL.