

For Research Use Only

# SLC4A1 Monoclonal Matched Antibody Pair, PBS Only



Catalog Number:MP50547-3

## Capture Antibody Information

**Catalog Number:**  
66984-4-PBS  
**Host:**  
Mouse  
**Isotype:**  
IgG1  
**Purification Method:**  
Protein G purification

**Clone ID:**  
4G3C11  
**Reactivity:**  
human  
**GenBank:**  
BC101570  
**Immunogen Catalog Number:**  
Ag28058

**Conjugate:**  
Unconjugated  
**Full name:**  
solute carrier family 4, anion exchanger, member 1 (erythrocyte membrane protein band 3, Diego blood group)  
**Gene ID:**  
6521

## Detection Antibody Information

**Catalog Number:**  
66984-3-PBS  
**Host:**  
Mouse  
**Isotype:**  
IgG3  
**Purification Method:**  
Protein A Magarose purification

**Clone ID:**  
1C2H1  
**Reactivity:**  
human  
**GenBank:**  
BC101570  
**Immunogen Catalog Number:**  
Ag28058

**Conjugate:**  
Unconjugated  
**Full name:**  
solute carrier family 4, anion exchanger, member 1 (erythrocyte membrane protein band 3, Diego blood group)  
**Gene ID:**  
6521

## Applications

**Tested Applications:**  
Cytometric bead array

**Range:**  
1.563-100 ng/mL (Cytometric Bead Array)

**Recommended Dilutions:**  
It is recommended that this reagent should be titrated in each testing system to obtain optimal results.

## Product Information

MP50547-3 targets SLC4A1 in immunoassays as a matched antibody pair. Validated in Cytometric bead array.  
Capture antibody: SLC4A1 Monoclonal antibody, PBS Only (Capture) 66984-4-PBS (4G3C11). 100 µg. Concentration 1 mg/mL.  
Detection antibody: SLC4A1 Monoclonal antibody, PBS Only (Detector) 66984-3-PBS (1C2H1). 100 µg. Concentration 1 mg/mL.  
Alternative SLC4A1 matched antibody pairs: MP50547-1, MP50547-2  
Unconjugated mouse monoclonal antibody pair in PBS only storage buffer at a concentration of 1 mg/mL, ready for conjugation.  
Matched antibody pairs are designed for use in a variety of assays and platforms that require matched antibody pairs.  
Antibody use should be optimized for each application and assay.

## Storage

**Storage:**  
Store at -80°C.  
**The product is shipped with ice packs. Upon receipt, store it immediately at -80°C**  
**Storage buffer:**  
PBS only

For technical support and original validation data for this product please contact:

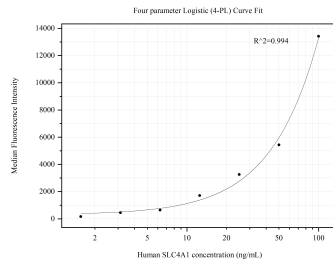
T: 4006900926

E: Proteintech-CN@ptglab.com

W: ptgcn.com

**This product is exclusively available under Proteintech Group brand and is not available to purchase from any other manufacturer.**

## Selected Validation Data



Cytometric bead array standard curve of MP50547-3, SLC4A1 Monoclonal Matched Antibody Pair, PBS Only. Capture antibody: 66984-4-PBS. Detection antibody: 66984-3-PBS. Standard: Ag28058. Range: 1.563-100 ng/mL.