

For Research Use Only

DLAT Monoclonal Matched Antibody Pair, PBS Only



Catalog Number:MP50549-3

Capture Antibody Information

Catalog Number: 68303-6-PBS	Clone ID: 1A8G8	Conjugate: Unconjugated
Host: Mouse	Reactivity: human	Full name: dihydroliipoamide S-acetyltransferase
Isotype: IgG2a	GenBank: BC039084	Gene ID: 1737
Purification Method: Protein A Magarose purification	Immunogen Catalog Number: Ag4226	

Detection Antibody Information

Catalog Number: 68303-7-PBS	Clone ID: 1A12H9	Conjugate: Unconjugated
Host: Mouse	Reactivity: human	Full name: dihydroliipoamide S-acetyltransferase
Isotype: IgG1	GenBank: BC039084	Gene ID: 1737
Purification Method: Protein G Magarose purification	Immunogen Catalog Number: Ag4226	

Applications

Tested Applications: Cytometric bead array	Range: 1.563-50 ng/mL (Cytometric Bead Array)	Recommended Dilutions: It is recommended that this reagent should be titrated in each testing system to obtain optimal results.
--	---	---

Product Information

MP50549-3 targets DLAT in immunoassays as a matched antibody pair. Validated in Cytometric bead array.

Capture antibody: DLAT Monoclonal antibody, PBS Only (Capture) 68303-6-PBS (1A8G8). 100 μ g. Concentration 1 mg/mL.

Detection antibody: DLAT Monoclonal antibody, PBS Only (Detector) 68303-7-PBS (1A12H9). 100 μ g. Concentration 1 mg/mL.

Alternative DLAT matched antibody pairs: MP00635-1, MP00635-2, MP00635-3, MP50549-1, MP50549-2, MP50549-4

Unconjugated mouse monoclonal antibody pair in PBS only storage buffer at a concentration of 1 mg/mL, ready for conjugation.

Matched antibody pairs are designed for use in a variety of assays and platforms that require matched antibody pairs.

Antibody use should be optimized for each application and assay.

Storage

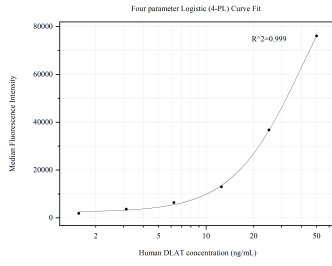
Storage:
Store at -80°C.
The product is shipped with ice packs. Upon receipt, store it immediately at -80°C

Storage buffer:
PBS only

For technical support and original validation data for this product please contact:
T: 4006900926 E: Proteintech-CN@ptglab.com W: ptgcn.com

This product is exclusively available under Proteintech Group brand and is not available to purchase from any other manufacturer.

Selected Validation Data



Cytometric bead array standard curve of MP50549-3, DLAT Monoclonal Matched Antibody Pair, PBS Only. Capture antibody: 68303-6-PBS. Detection antibody: 68303-7-PBS. Standard: Ag4226. Range: 1.563-50 ng/mL