

Tim23 Monoclonal Matched Antibody Pair, PBS Only

Catalog Number:MP50554-1

Capture Antibody Information

Catalog Number:
67535-2-PBS

Host:
Mouse

Isotype:
IgG2b

Purification Method:
Protein A Magarose purification

Clone ID:
3D11F2

Reactivity:
human

GenBank:
BC062707

Immunogen Catalog Number:
Ag27069

Conjugate:
Unconjugated

Full name:
translocase of inner mitochondrial membrane 23 homolog (yeast)

Gene ID:
10431

Detection Antibody Information

Catalog Number:
67535-3-PBS

Host:
Mouse

Isotype:
IgG1

Purification Method:
Protein G Magarose purification

Clone ID:
2E7G5

Reactivity:
human

GenBank:
BC062707

Immunogen Catalog Number:
Ag27069

Conjugate:
Unconjugated

Full name:
translocase of inner mitochondrial membrane 23 homolog (yeast)

Gene ID:
10431

Applications

Tested Applications:
Cytometric bead array

Range:
0.098-100 ng/mL (Cytometric Bead Array)

Recommended Dilutions:
It is recommended that this reagent should be titrated in each testing system to obtain optimal results.

Product Information

MP50554-1 targets Tim23 in immunoassays as a matched antibody pair. Validated in Cytometric bead array.

Capture antibody: Tim23 Monoclonal antibody, PBS Only (Capture) 67535-2-PBS (3D11F2). 100 µg. Concentration 1 mg/ml.

Detection antibody: Tim23 Monoclonal antibody, PBS Only (Capture/Detector) 67535-3-PBS (2E7G5). 100 µg. Concentration 1 mg/ml.

Alternative Tim23 matched antibody pairs: MP50554-2, MP50554-3

Unconjugated mouse monoclonal antibody pair in PBS only storage buffer at a concentration of 1 mg/mL, ready for conjugation.

Matched antibody pairs are designed for use in a variety of assays and platforms that require matched antibody pairs.

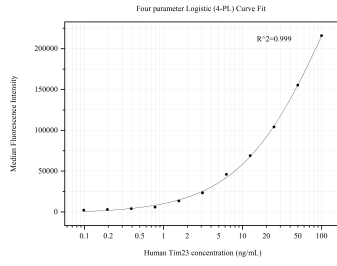
Antibody use should be optimized for each application and assay.

Storage

Storage:
Store at -80°C.
The product is shipped with ice packs. Upon receipt, store it immediately at -80°C

Storage buffer:
PBS only

Selected Validation Data



Cytometric bead array standard curve of MP50554-1, Tim23 Monoclonal Matched Antibody Pair, PBS Only. Capture antibody: 67535-2-PBS. Detection antibody: 67535-3-PBS. Standard: Ag27069. Range: 0.098-100 ng/mL.