

For Research Use Only

CD40L/CD154 Monoclonal Matched Antibody Pair, PBS Only



Catalog Number:MP50596-2

Capture Antibody Information

Catalog Number:
60441-3-PBS

Host:
Mouse

Isotype:
IgG2a

Purification Method:
Protein A purification

Clone ID:
4C10C4

Reactivity:
human

GenBank:
BC071754

Conjugate:
Unconjugated

Full name:
CD40 ligand

Gene ID:
959

Detection Antibody Information

Catalog Number:
60441-4-PBS

Host:
Mouse

Isotype:
IgG1

Purification Method:
Protein G Magarose purification

Clone ID:
2E12F3

Reactivity:
human

GenBank:
BC071754

Conjugate:
Unconjugated

Full name:
CD40 ligand

Gene ID:
959

Applications

Tested Applications:
Cytometric bead array

Range:
0.781-200 ng/mL (Cytometric Bead Array)

Recommended Dilutions:
It is recommended that this reagent should be titrated in each testing system to obtain optimal results.

Product Information

MP50596-2 targets CD40L/CD154 in immunoassays as a matched antibody pair. Validated in Cytometric bead array.

Capture antibody: CD40L/CD154 Monoclonal antibody, PBS Only (Capture) 60441-3-PBS (4C10C4). 100 µg. Concentration 1 mg/ml.

Detection antibody: CD40L/CD154 Monoclonal antibody, PBS Only (Detector) 60441-4-PBS (2E12F3). 100 µg. Concentration 1 mg/ml.

Alternative CD40L/CD154 matched antibody pairs: MP00845-1, MP50596-1, MP50596-3

Unconjugated mouse monoclonal antibody pair in PBS only storage buffer at a concentration of 1 mg/mL, ready for conjugation.

Matched antibody pairs are designed for use in a variety of assays and platforms that require matched antibody pairs.

Antibody use should be optimized for each application and assay.

Storage

Storage:
Store at -80°C.

The product is shipped with ice packs. Upon receipt, store it immediately at -80°C

Storage buffer:
PBS only

For technical support and original validation data for this product please contact:

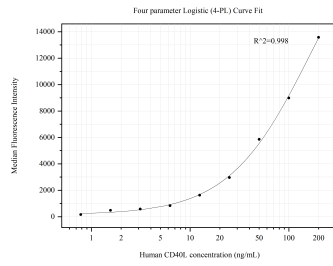
T: 4006900926

E: Proteintech-CN@ptglab.com

W: ptgcn.com

This product is exclusively available under Proteintech Group brand and is not available to purchase from any other manufacturer.

Selected Validation Data



Cytometric bead array standard curve of MP50596-2, CD40L/CD154 Monoclonal Matched Antibody Pair, PBS Only. Capture antibody: 60441-3-PBS. Detection antibody: 60441-4-PBS. Standard: Eg0054. Range: 0.781-200 ng/mL