

For Research Use Only

SLC25A3 Monoclonal Matched Antibody Pair, PBS Only



Catalog Number:MP50610-2

Capture Antibody Information

Catalog Number:
60451-3-PBS

Host:
Mouse

Isotype:
IgG1

Purification Method:
Protein G Magarose purification

Clone ID:
2B11B5

Reactivity:
human

GenBank:
BC003504

Immunogen Catalog Number:
Ag4377

Conjugate:
Unconjugated

Full name:
solute carrier family 25
(mitochondrial carrier; phosphate
carrier), member 3

Gene ID:
5250

Detection Antibody Information

Catalog Number:
60451-4-PBS

Host:
Mouse

Isotype:
IgG1

Purification Method:
Protein G Magarose purification

Clone ID:
2B6F6

Reactivity:
human

GenBank:
BC003504

Immunogen Catalog Number:
Ag4377

Conjugate:
Unconjugated

Full name:
solute carrier family 25
(mitochondrial carrier; phosphate
carrier), member 3

Gene ID:
5250

Applications

Tested Applications:
Cytometric bead array

Range:
0.781-100 ng/mL (Cytometric Bead
Array)

Recommended Dilutions:
It is recommended that this reagent
should be titrated in each testing
system to obtain optimal results.

Product Information

MP50610-2 targets SLC25A3 in immunoassays as a matched antibody pair. Validated in Cytometric bead array.

Capture antibody: SLC25A3 Monoclonal antibody, PBS Only (Capture) 60451-3-PBS (2B11B5). 100 μ g. Concentration 1 mg/mL.

Detection antibody: SLC25A3 Monoclonal antibody, PBS Only (Detector) 60451-4-PBS (2B6F6). 100 μ g. Concentration 1 mg/mL.

Alternative SLC25A3 matched antibody pairs: MP00046-1, MP00046-2, MP00046-3, MP50610-1, MP50610-3

Unconjugated mouse monoclonal antibody pair in PBS only storage buffer at a concentration of 1 mg/mL, ready for conjugation.

Matched antibody pairs are designed for use in a variety of assays and platforms that require matched antibody pairs.

Antibody use should be optimized for each application and assay.

Storage

Storage:
Store at -80°C.

The product is shipped with ice packs. Upon receipt, store it immediately at -80°C

Storage buffer:
PBS only

For technical support and original validation data for this product please contact:

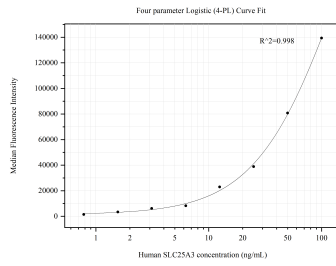
T: 4006900926

E: Proteintech-CN@ptglab.com

W: ptgcn.com

This product is exclusively available under Proteintech Group brand and is not available to purchase from any other manufacturer.

Selected Validation Data



Cytometric bead array standard curve of MP50610-2, SLC25A3 Monoclonal Matched Antibody Pair, PBS Only. Capture antibody: 60451-3-PBS. Detection antibody: 60451-4-PBS. Standard: Ag4377. Range: 0.781-100 ng/mL.