

SLC25A3 Monoclonal Matched Antibody Pair, PBS Only

Catalog Number:MP50610-3

Capture Antibody Information

Catalog Number:
60451-5-PBS

Host:
Mouse

Isotype:
IgG1

Purification Method:
Protein G Magarose purification

Clone ID:
3F9G3

Reactivity:
human

GenBank:
BC003504

Immunogen Catalog Number:
Ag4377

Conjugate:
Unconjugated

Full name:
solute carrier family 25
(mitochondrial carrier; phosphate
carrier), member 3

Gene ID:
5250

Detection Antibody Information

Catalog Number:
60451-4-PBS

Host:
Mouse

Isotype:
IgG1

Purification Method:
Protein G Magarose purification

Clone ID:
2B6F6

Reactivity:
human

GenBank:
BC003504

Immunogen Catalog Number:
Ag4377

Conjugate:
Unconjugated

Full name:
solute carrier family 25
(mitochondrial carrier; phosphate
carrier), member 3

Gene ID:
5250

Applications

Tested Applications:
Cytometric bead array

Range:
0.195-12.5 ng/mL (Cytometric Bead
Array)

Recommended Dilutions:
It is recommended that this reagent
should be titrated in each testing
system to obtain optimal results.

Product Information

MP50610-3 targets SLC25A3 in immunoassays as a matched antibody pair. Validated in Cytometric bead array.

Capture antibody: SLC25A3 Monoclonal antibody, PBS Only (Capture) 60451-5-PBS (3F9G3). 100 µg. Concentration 1 mg/ml.

Detection antibody: SLC25A3 Monoclonal antibody, PBS Only (Detector) 60451-4-PBS (2B6F6). 100 µg. Concentration 1 mg/ml.

Alternative SLC25A3 matched antibody pairs: MP00046-1, MP00046-2, MP00046-3, MP50610-1, MP50610-2

Unconjugated mouse monoclonal antibody pair in PBS only storage buffer at a concentration of 1 mg/mL, ready for conjugation.

Matched antibody pairs are designed for use in a variety of assays and platforms that require matched antibody pairs.

Antibody use should be optimized for each application and assay.

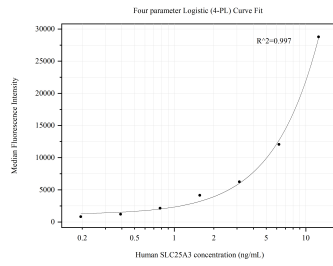
Storage

Storage:
Store at -80°C.

The product is shipped with ice packs. Upon receipt, store it immediately at -80°C

Storage buffer:
PBS only

Selected Validation Data



Cytometric bead array standard curve of MP50610-3, SLC25A3 Monoclonal Matched Antibody Pair, PBS Only. Capture antibody: 60451-5-PBS. Detection antibody: 60451-4-PBS. Standard: Ag4377. Range: 0.195-12.5 ng/mL