

For Research Use Only

ALAS2 Monoclonal Matched Antibody Pair, PBS Only



Catalog Number:MP50624-3

Capture Antibody Information

Catalog Number:
68332-2-PBS
Host:
Mouse
Isotype:
IgG1
Purification Method:
Protein G purification

Clone ID:
2B3C12
Reactivity:
human
GenBank:
BC030230
Immunogen Catalog Number:
Ag13524

Conjugate:
Unconjugated
Full name:
aminolevulinate, delta-, synthase 2
Gene ID:
212

Detection Antibody Information

Catalog Number:
68332-3-PBS
Host:
Mouse
Isotype:
IgG1
Purification Method:
Protein G Magarose purification

Clone ID:
1B2E6
Reactivity:
human
GenBank:
BC030230
Immunogen Catalog Number:
Ag13524

Conjugate:
Unconjugated
Full name:
aminolevulinate, delta-, synthase 2
Gene ID:
212

Applications

Tested Applications:
Cytometric bead array

Range:
6.25-100 ng/mL (Cytometric Bead Array)

Recommended Dilutions:
It is recommended that this reagent should be titrated in each testing system to obtain optimal results.

Product Information

MP50624-3 targets ALAS2 in immunoassays as a matched antibody pair. Validated in Cytometric bead array.
Capture antibody: ALAS2 Monoclonal antibody, PBS Only (Capture/Detector) 68332-2-PBS (2B3C12). 100 µg. Concentration 1 mg/mL.
Detection antibody: ALAS2 Monoclonal antibody, PBS Only (Detector) 68332-3-PBS (1B2E6). 100 µg. Concentration 1 mg/mL.
Alternative ALAS2 matched antibody pairs: MP50624-1, MP50624-2, MP50624-4
Unconjugated mouse monoclonal antibody pair in PBS only storage buffer at a concentration of 1 mg/mL, ready for conjugation.
Matched antibody pairs are designed for use in a variety of assays and platforms that require matched antibody pairs.
Antibody use should be optimized for each application and assay.

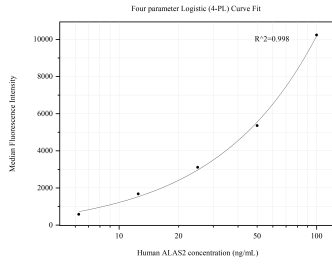
Storage

Storage:
Store at -80°C.
The product is shipped with ice packs. Upon receipt, store it immediately at -80°C
Storage buffer:
PBS only

For technical support and original validation data for this product please contact:
T: 4006900926 E: Proteintech-CN@ptglab.com W: ptgcn.com

This product is exclusively available under Proteintech Group brand and is not available to purchase from any other manufacturer.

Selected Validation Data



Cytometric bead array standard curve of MP50624-3, ALAS2 Monoclonal Matched Antibody Pair, PBS Only. Capture antibody: 68332-2-PBS. Detection antibody: 68332-3-PBS. Standard: Ag13524. Range: 6.25-100 ng/mL