

# MYL3 Monoclonal Matched Antibody Pair, PBS Only

Catalog Number:MP50642-3

## Capture Antibody Information

**Catalog Number:**  
66286-1-PBS  
**Host:**  
Mouse  
**Isotype:**  
IgG1  
**Purification Method:**  
Protein G purification

**Clone ID:**  
2E4B2  
**Reactivity:**  
human, mouse, rat, pig  
**GenBank:**  
BC009790  
**Immunogen Catalog Number:**  
Ag24535

**Conjugate:**  
Unconjugated  
**Full name:**  
myosin, light chain 3, alkali;  
ventricular, skeletal, slow  
**Gene ID:**  
4634

## Detection Antibody Information

**Catalog Number:**  
66286-5-PBS  
**Host:**  
Mouse  
**Isotype:**  
IgG1  
**Purification Method:**  
Protein G Magarose purification

**Clone ID:**  
2D1A2  
**Reactivity:**  
human  
**GenBank:**  
BC009790  
**Immunogen Catalog Number:**  
Ag24535

**Conjugate:**  
Unconjugated  
**Full name:**  
myosin, light chain 3, alkali;  
ventricular, skeletal, slow  
**Gene ID:**  
4634

## Applications

**Tested Applications:**  
Cytometric bead array

**Range:**  
0.098-6.25 ng/mL (Cytometric Bead Array)

**Recommended Dilutions:**  
It is recommended that this reagent should be titrated in each testing system to obtain optimal results.

## Product Information

MP50642-3 targets MYL3 in immunoassays as a matched antibody pair. Validated in Cytometric bead array.

Capture antibody: MYL3 Monoclonal antibody, PBS Only (Capture) 66286-1-PBS (2E4B2). 100 µg. Concentration 1 mg/ml.

Detection antibody: MYL3 Monoclonal antibody, PBS Only (Detector) 66286-5-PBS (2D1A2). 100 µg. Concentration 1 mg/ml.

Alternative MYL3 matched antibody pairs: MP50642-1, MP50642-2

Unconjugated mouse monoclonal antibody pair in PBS only storage buffer at a concentration of 1 mg/mL, ready for conjugation.

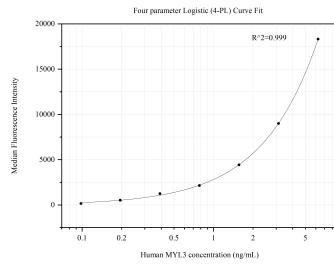
Matched antibody pairs are designed for use in a variety of assays and platforms that require matched antibody pairs.

Antibody use should be optimized for each application and assay.

## Storage

**Storage:**  
Store at -80°C.  
**The product is shipped with ice packs. Upon receipt, store it immediately at -80°C**  
**Storage buffer:**  
PBS only

## Selected Validation Data



Cytometric bead array standard curve of MP50642-3, MYL3 Monoclonal Matched Antibody Pair, PBS Only. Capture antibody: 66286-1-PBS. Detection antibody: 66286-5-PBS. Standard: Ag24535. Range: 0.098-6.25 ng/mL