

For Research Use Only

C20orf30 Monoclonal Matched Antibody Pair, PBS Only



Catalog Number:MP50730-2

Capture Antibody Information

Catalog Number:
67247-2-PBS

Host:
Mouse

Isotype:
IgG1

Purification Method:
Protein G Magarose purification

Clone ID:
4E7A7

Reactivity:
human

GenBank:
BC011990

Immunogen Catalog Number:
Ag15080

Conjugate:
Unconjugated

Full name:
chromosome 20 open reading frame
30

Gene ID:
29058

Detection Antibody Information

Catalog Number:
67247-4-PBS

Host:
Mouse

Isotype:
IgG2b

Purification Method:
Protein A Magarose purification

Clone ID:
3A6A6

Reactivity:
human

GenBank:
BC011990

Immunogen Catalog Number:
Ag15080

Conjugate:
Unconjugated

Full name:
chromosome 20 open reading frame
30

Gene ID:
29058

Applications

Tested Applications:
Cytometric bead array

Range:
0.391-100 ng/mL (Cytometric Bead
Array)

Recommended Dilutions:
It is recommended that this reagent
should be titrated in each testing
system to obtain optimal results.

Product Information

MP50730-2 targets C20orf30 in immunoassays as a matched antibody pair. Validated in Cytometric bead array.

Capture antibody: C20orf30 Monoclonal antibody, PBS Only (Capture) 67247-2-PBS (4E7A7). 100 μ g. Concentration 1 mg/ml.

Detection antibody: C20orf30 Monoclonal antibody, PBS Only (Capture/Detector) 67247-4-PBS (3A6A6). 100 μ g. Concentration 1 mg/ml.

Alternative C20orf30 matched antibody pairs: MP50730-1

Unconjugated mouse monoclonal antibody pair in PBS only storage buffer at a concentration of 1 mg/mL, ready for conjugation.

Matched antibody pairs are designed for use in a variety of assays and platforms that require matched antibody pairs.

Antibody use should be optimized for each application and assay.

Storage

Storage:
Store at -80°C.

The product is shipped with ice packs. Upon receipt, store it immediately at -80°C

Storage buffer:
PBS only

For technical support and original validation data for this product please contact:

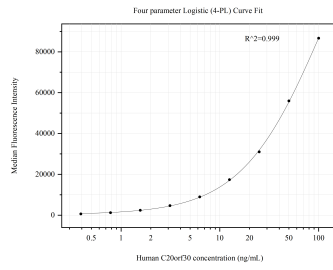
T: 4006900926

E: Proteintech-CN@ptglab.com

W: ptgcn.com

This product is exclusively available under Proteintech Group brand and is not available to purchase from any other manufacturer.

Selected Validation Data



Cytometric bead array standard curve of MP50730-2, C20orf30 Monoclonal Matched Antibody Pair, PBS Only. Capture antibody: 67247-2-PBS. Detection antibody: 67247-4-PBS. Standard: Ag15080. Range: 0.391-100 ng/mL.