

# LPCAT1 Monoclonal Matched Antibody Pair, PBS Only

Catalog Number:MP50776-1

## Capture Antibody Information

<b>Catalog Number:</b> 66044-2-PBS	<b>Clone ID:</b> 2C11D12	<b>Conjugate:</b> Unconjugated
<b>Host:</b> Mouse	<b>Reactivity:</b> human	<b>Full name:</b> lysophosphatidylcholine acyltransferase 1
<b>Isotype:</b> IgG1	<b>GenBank:</b> BC020166	<b>Gene ID:</b> 79888
<b>Purification Method:</b> Protein G Magarose purification	<b>Immunogen Catalog Number:</b> Ag9060	

## Detection Antibody Information

<b>Catalog Number:</b> 66044-3-PBS	<b>Clone ID:</b> 4G2D5	<b>Conjugate:</b> Unconjugated
<b>Host:</b> Mouse	<b>Reactivity:</b> human	<b>Full name:</b> lysophosphatidylcholine acyltransferase 1
<b>Isotype:</b> IgG2b	<b>GenBank:</b> BC020166	<b>Gene ID:</b> 79888
<b>Purification Method:</b> Protein A Magarose purification	<b>Immunogen Catalog Number:</b> Ag9060	

## Applications

<b>Tested Applications:</b> Cytometric bead array	<b>Range:</b> 0.098-25 ng/mL (Cytometric Bead Array)	<b>Recommended Dilutions:</b> It is recommended that this reagent should be titrated in each testing system to obtain optimal results.
--	---	---

## Product Information

MP50776-1 targets LPCAT1 in immunoassays as a matched antibody pair. Validated in Cytometric bead array.

Capture antibody: LPCAT1 Monoclonal antibody, PBS Only (Capture/Detector) 66044-2-PBS (2C11D12). 100 µg. Concentration 1 mg/ml.

Detection antibody: LPCAT1 Monoclonal antibody, PBS Only (Detector) 66044-3-PBS (4G2D5). 100 µg. Concentration 1 mg/ml.

Unconjugated mouse monoclonal antibody pair in PBS only storage buffer at a concentration of 1 mg/mL, ready for conjugation.

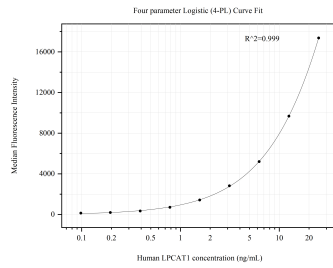
Matched antibody pairs are designed for use in a variety of assays and platforms that require matched antibody pairs.

Antibody use should be optimized for each application and assay.

## Storage

**Storage:**  
Store at -80°C.  
**The product is shipped with ice packs. Upon receipt, store it immediately at -80°C**  
**Storage buffer:**  
PBS only

## Selected Validation Data



Cytometric bead array standard curve of MP50776-1, LPCAT1 Monoclonal Matched Antibody Pair, PBS Only. Capture antibody: 66044-2-PBS. Detection antibody: 66044-3-PBS. Standard: Ag9060. Range: 0.098-25 ng/mL