

For Research Use Only

# SDHA Monoclonal Matched Antibody Pair, PBS Only



Catalog Number:MP50790-1

## Capture Antibody Information

**Catalog Number:**  
66588-1-PBS  
**Host:**  
Mouse  
**Isotype:**  
IgG1  
**Purification Method:**  
Protein A purification

**Clone ID:**  
5E10G12  
**Reactivity:**  
human, mouse, rat, pig, rabbit  
**GenBank:**  
BC001380  
**Immunogen Catalog Number:**  
Ag7023

**Conjugate:**  
Unconjugated  
**Full name:**  
succinate dehydrogenase complex, subunit A, flavoprotein (Fp)  
**Gene ID:**  
6389

## Detection Antibody Information

**Catalog Number:**  
66588-2-PBS  
**Host:**  
Mouse  
**Isotype:**  
IgG1  
**Purification Method:**  
Protein G Magarose purification

**Clone ID:**  
1C12C12  
**Reactivity:**  
human  
**GenBank:**  
BC001380  
**Immunogen Catalog Number:**  
Ag7023

**Conjugate:**  
Unconjugated  
**Full name:**  
succinate dehydrogenase complex, subunit A, flavoprotein (Fp)  
**Gene ID:**  
6389

## Applications

**Tested Applications:**  
Cytometric bead array

**Range:**  
0.781-200 ng/mL (Cytometric Bead Array)

**Recommended Dilutions:**  
It is recommended that this reagent should be titrated in each testing system to obtain optimal results.

## Product Information

MP50790-1 targets SDHA in immunoassays as a matched antibody pair. Validated in Cytometric bead array.

Capture antibody: SDHA Monoclonal antibody, PBS Only (Capture) 66588-1-PBS (5E10G12). 100 µg. Concentration 1 mg/ml.

Detection antibody: SDHA Monoclonal antibody, PBS Only (Capture/Detector) 66588-2-PBS (1C12C12). 100 µg. Concentration 1 mg/ml.

Unconjugated mouse monoclonal antibody pair in PBS only storage buffer at a concentration of 1 mg/mL, ready for conjugation.

Matched antibody pairs are designed for use in a variety of assays and platforms that require matched antibody pairs.

Antibody use should be optimized for each application and assay.

## Storage

**Storage:**  
Store at -80°C.  
**The product is shipped with ice packs. Upon receipt, store it immediately at -80°C**  
**Storage buffer:**  
PBS only

For technical support and original validation data for this product please contact:

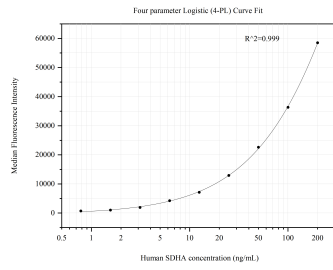
T: 4006900926

E: [Proteintech-CN@ptglab.com](mailto:Proteintech-CN@ptglab.com)

W: [ptgcn.com](http://ptgcn.com)

**This product is exclusively available under Proteintech Group brand and is not available to purchase from any other manufacturer.**

## Selected Validation Data



Cytometric bead array standard curve of MP50790-1, SDHA Monoclonal Matched Antibody Pair, PBS Only. Capture antibody: 66588-1-PBS. Detection antibody: 66588-2-PBS. Standard: Ag7023. Range: 0.781-200 ng/mL.