

For Research Use Only

SDHA Monoclonal Matched Antibody Pair, PBS Only



Catalog Number:MP50790-4

Capture Antibody Information

Catalog Number:
66588-2-PBS
Host:
Mouse
Isotype:
IgG1
Purification Method:
Protein G Magarose purification

Clone ID:
1C12C12
Reactivity:
human
GenBank:
BC001380
Immunogen Catalog Number:
Ag7023

Conjugate:
Unconjugated
Full name:
succinate dehydrogenase complex, subunit A, flavoprotein (Fp)
Gene ID:
6389

Detection Antibody Information

Catalog Number:
66588-3-PBS
Host:
Mouse
Isotype:
IgG1
Purification Method:
Protein G Magarose purification

Clone ID:
7B5B12
Reactivity:
human
GenBank:
BC001380
Immunogen Catalog Number:
Ag7023

Conjugate:
Unconjugated
Full name:
succinate dehydrogenase complex, subunit A, flavoprotein (Fp)
Gene ID:
6389

Applications

Tested Applications:
Cytometric bead array

Range:
0.781-200 ng/mL (Cytometric Bead Array)

Recommended Dilutions:
It is recommended that this reagent should be titrated in each testing system to obtain optimal results.

Product Information

MP50790-4 targets SDHA in immunoassays as a matched antibody pair. Validated in Cytometric bead array.
Capture antibody: SDHA Monoclonal antibody, PBS Only (Capture/Detector) 66588-2-PBS (1C12C12). 100 µg. Concentration 1 mg/ml.
Detection antibody: SDHA Monoclonal antibody, PBS Only (Detector) 66588-3-PBS (7B5B12). 100 µg. Concentration 1 mg/ml.
Alternative SDHA matched antibody pairs: MP50790-1, MP50790-2, MP50790-3
Unconjugated mouse monoclonal antibody pair in PBS only storage buffer at a concentration of 1 mg/mL, ready for conjugation.
Matched antibody pairs are designed for use in a variety of assays and platforms that require matched antibody pairs.
Antibody use should be optimized for each application and assay.

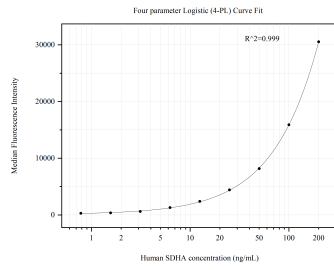
Storage

Storage:
Store at -80°C.
The product is shipped with ice packs. Upon receipt, store it immediately at -80°C
Storage buffer:
PBS only

For technical support and original validation data for this product please contact:
T: 4006900926 E: Proteintech-CN@ptglab.com W: ptgcn.com

This product is exclusively available under Proteintech Group brand and is not available to purchase from any other manufacturer.

Selected Validation Data



Cytometric bead array standard curve of MP50790-4, SDHA Monoclonal Matched Antibody Pair, PBS Only. Capture antibody: 66588-2-PBS. Detection antibody: 66588-3-PBS. Standard:Ag7023. Range: 0.781-200 ng/mL.