

# LSM14A Monoclonal Matched Antibody Pair, PBS Only

Catalog Number:MP50794-2

## Capture Antibody Information

<b>Catalog Number:</b> 60563-3-PBS	<b>Clone ID:</b> 1G12H5	<b>Conjugate:</b> Unconjugated
<b>Host:</b> Mouse	<b>Reactivity:</b> human	<b>Full name:</b> LSM14A, SCD6 homolog A (S. cerevisiae)
<b>Isotype:</b> IgG1	<b>GenBank:</b> BC016842	<b>Gene ID:</b> 26065
<b>Purification Method:</b> Protein G Magarose purification	<b>Immunogen Catalog Number:</b> Ag12997	

## Detection Antibody Information

<b>Catalog Number:</b> 60563-4-PBS	<b>Clone ID:</b> 3H10D9	<b>Conjugate:</b> Unconjugated
<b>Host:</b> Mouse	<b>Reactivity:</b> human	<b>Full name:</b> LSM14A, SCD6 homolog A (S. cerevisiae)
<b>Isotype:</b> IgG2b	<b>GenBank:</b> BC016842	<b>Gene ID:</b> 26065
<b>Purification Method:</b> Protein A Magarose purification	<b>Immunogen Catalog Number:</b> Ag12997	

## Applications

<b>Tested Applications:</b> Cytometric bead array	<b>Range:</b> 6.25-100 ng/mL (Cytometric Bead Array)	<b>Recommended Dilutions:</b> It is recommended that this reagent should be titrated in each testing system to obtain optimal results.
--	---	---

## Product Information

MP50794-2 targets LSM14A in immunoassays as a matched antibody pair. Validated in Cytometric bead array.

Capture antibody: LSM14A Monoclonal antibody, PBS Only (Capture) 60563-3-PBS (1G12H5). 100 µg. Concentration 1 mg/ml.

Detection antibody: LSM14A Monoclonal antibody, PBS Only (Detector) 60563-4-PBS (3H10D9). 100 µg. Concentration 1 mg/ml.

Alternative LSM14A matched antibody pairs: MP00463-1, MP00463-2, MP00463-3, MP50794-1

Unconjugated mouse monoclonal antibody pair in PBS only storage buffer at a concentration of 1 mg/mL, ready for conjugation.

Matched antibody pairs are designed for use in a variety of assays and platforms that require matched antibody pairs.

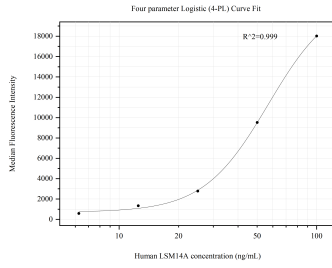
Antibody use should be optimized for each application and assay.

## Storage

**Storage:**  
Store at -80°C.  
**The product is shipped with ice packs. Upon receipt, store it immediately at -80°C**

**Storage buffer:**  
PBS only

## Selected Validation Data



Cytometric bead array standard curve of MP50794-2, LSM14A Monoclonal Matched Antibody Pair, PBS Only. Capture antibody: 60563-3-PBS. Detection antibody: 60563-4-PBS. Standard:Ag12997. Range: 6.25-100 ng/mL