

For Research Use Only

TRAPA, SSR1 Monoclonal Matched Antibody Pair, PBS Only



Catalog Number:MP50817-3

Capture Antibody Information

Catalog Number:
67925-4-PBS

Host:
Mouse

Isotype:
IgG1

Purification Method:
Protein G purification

Clone ID:
2F10C4

Reactivity:
human

GenBank:
BC007710

Immunogen Catalog Number:
Ag30832

Conjugate:
Unconjugated

Full name:
signal sequence receptor, alpha

Gene ID:
6745

Detection Antibody Information

Catalog Number:
67925-5-PBS

Host:
Mouse

Isotype:
IgG2a

Purification Method:
Protein A Magarose purification

Clone ID:
1F5F5

Reactivity:
human

GenBank:
BC007710

Immunogen Catalog Number:
Ag30832

Conjugate:
Unconjugated

Full name:
signal sequence receptor, alpha

Gene ID:
6745

Applications

Tested Applications:
Cytometric bead array

Range:
3.125-100 ng/mL (Cytometric Bead Array)

Recommended Dilutions:
It is recommended that this reagent should be titrated in each testing system to obtain optimal results.

Product Information

MP50817-3 targets TRAPA, SSR1 in immunoassays as a matched antibody pair. Validated in Cytometric bead array.

Capture antibody: TRAPA, SSR1 Monoclonal antibody, PBS Only (Capture) 67925-4-PBS (2F10C4). 100 μ g. Concentration 1 mg/ml.

Detection antibody: TRAPA, SSR1 Monoclonal antibody, PBS Only (Detector) 67925-5-PBS (1F5F5). 100 μ g. Concentration 1 mg/ml.

Alternative TRAPA, SSR1 matched antibody pairs: MP50817-1, MP50817-2

Unconjugated mouse monoclonal antibody pair in PBS only storage buffer at a concentration of 1 mg/mL, ready for conjugation.

Matched antibody pairs are designed for use in a variety of assays and platforms that require matched antibody pairs.

Antibody use should be optimized for each application and assay.

Storage

Storage:
Store at -80°C.

The product is shipped with ice packs. Upon receipt, store it immediately at -80°C

Storage buffer:
PBS only

For technical support and original validation data for this product please contact:

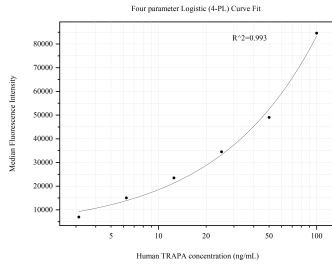
T: 4006900926

E: Proteintech-CN@ptglab.com

W: ptgcn.com

This product is exclusively available under Proteintech Group brand and is not available to purchase from any other manufacturer.

Selected Validation Data



Cytometric bead array standard curve of MP50817-3, TRAPA, SSR1 Monoclonal Matched Antibody Pair, PBS Only. Capture antibody: 67925-4-PBS. Detection antibody: 67925-5-PBS. Standard: Ag30832. Range: 3.125-100 ng/mL.