

For Research Use Only

# TRAPA, SSR1 Monoclonal Matched Antibody Pair, PBS Only



Catalog Number:MP50817-4

## Capture Antibody Information

Catalog Number:  
67925-4-PBS

Host:  
Mouse

Isotype:  
IgG1

Purification Method:  
Protein G purification

Clone ID:  
2F10C4

Reactivity:  
human

GenBank:  
BC007710

Immunogen Catalog Number:  
Ag30832

Conjugate:  
Unconjugated

Full name:  
signal sequence receptor, alpha

Gene ID:  
6745

## Detection Antibody Information

Catalog Number:  
67925-6-PBS

Host:  
Mouse

Isotype:  
IgG2a

Purification Method:  
Protein A Magarose purification

Clone ID:  
2A10G11

Reactivity:  
human

GenBank:  
BC007710

Immunogen Catalog Number:  
Ag30832

Conjugate:  
Unconjugated

Full name:  
signal sequence receptor, alpha

Gene ID:  
6745

## Applications

Tested Applications:  
Cytometric bead array

Range:  
3.125-100 ng/mL (Cytometric Bead Array)

Recommended Dilutions:  
It is recommended that this reagent should be titrated in each testing system to obtain optimal results.

## Product Information

MP50817-4 targets TRAPA, SSR1 in immunoassays as a matched antibody pair. Validated in Cytometric bead array.

Capture antibody: TRAPA, SSR1 Monoclonal antibody, PBS Only (Capture) 67925-4-PBS (2F10C4). 100  $\mu$ g. Concentration 1 mg/ml.

Detection antibody: TRAPA, SSR1 Monoclonal antibody, PBS Only (Detector) 67925-6-PBS (2A10G11). 100  $\mu$ g. Concentration 1 mg/ml.

Alternative TRAPA, SSR1 matched antibody pairs: MP50817-1, MP50817-2, MP50817-3

Unconjugated mouse monoclonal antibody pair in PBS only storage buffer at a concentration of 1 mg/mL, ready for conjugation.

Matched antibody pairs are designed for use in a variety of assays and platforms that require matched antibody pairs.

Antibody use should be optimized for each application and assay.

## Storage

Storage:  
Store at -80°C.

The product is shipped with ice packs. Upon receipt, store it immediately at -80°C

Storage buffer:  
PBS only

For technical support and original validation data for this product please contact:

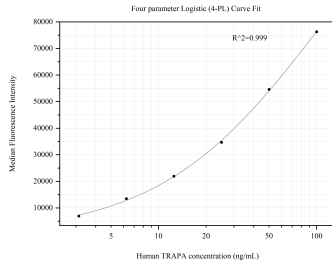
T: 4006900926

E: Proteintech-CN@ptglab.com

W: ptgcn.com

This product is exclusively available under Proteintech Group brand and is not available to purchase from any other manufacturer.

## Selected Validation Data



Cytometric bead array standard curve of MP50817-4, TRAPA, SSR1 Monoclonal Matched Antibody Pair, PBS Only. Capture antibody: 67925-4-PBS. Detection antibody: 67925-6-PBS. Standard: Ag30832. Range: 3.125-100 ng/mL.