

For Research Use Only

SLC33A1 Monoclonal Matched Antibody Pair, PBS Only



Catalog Number:MP50833-1

Capture Antibody Information

Catalog Number:
60585-1-PBS
Host:
Mouse
Isotype:
IgG2b
Purification Method:
Protein A purification

Clone ID:
3B1G5
Reactivity:
human
GenBank:
BC014416
Immunogen Catalog Number:
Ag13442

Conjugate:
Unconjugated
Full name:
solute carrier family 33 (acetyl-CoA transporter), member 1
Gene ID:
9197

Detection Antibody Information

Catalog Number:
60585-2-PBS
Host:
Mouse
Isotype:
IgG1
Purification Method:
Protein G Magarose purification

Clone ID:
1A4D4
Reactivity:
human
GenBank:
BC014416
Immunogen Catalog Number:
Ag13442

Conjugate:
Unconjugated
Full name:
solute carrier family 33 (acetyl-CoA transporter), member 1
Gene ID:
9197

Applications

Tested Applications:
Cytometric bead array

Range:
6.25-200 ng/mL (Cytometric Bead Array)

Recommended Dilutions:
It is recommended that this reagent should be titrated in each testing system to obtain optimal results.

Product Information

MP50833-1 targets SLC33A1 in immunoassays as a matched antibody pair. Validated in Cytometric bead array.
Capture antibody: SLC33A1 Monoclonal antibody, PBS Only (Capture) 60585-1-PBS (3B1G5). 100 µg. Concentration 1 mg/ml.
Detection antibody: SLC33A1 Monoclonal antibody, PBS Only (Detector) 60585-2-PBS (1A4D4). 100 µg. Concentration 1 mg/ml.
Unconjugated mouse monoclonal antibody pair in PBS only storage buffer at a concentration of 1 mg/mL, ready for conjugation.
Matched antibody pairs are designed for use in a variety of assays and platforms that require matched antibody pairs.
Antibody use should be optimized for each application and assay.

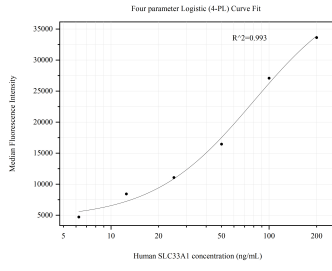
Storage

Storage:
Store at -80°C.
The product is shipped with ice packs. Upon receipt, store it immediately at -80°C
Storage buffer:
PBS only

For technical support and original validation data for this product please contact:
T: 4006900926 E: Proteintech-CN@ptglab.com W: ptgcn.com

This product is exclusively available under Proteintech Group brand and is not available to purchase from any other manufacturer.

Selected Validation Data



Cytometric bead array standard curve of MP50833-1, SLC33A1 Monoclonal Matched Antibody Pair, PBS Only. Capture antibody: 60585-1-PBS. Detection antibody: 60585-2-PBS. Standard: Ag13442. Range: 6.25-200 ng/mL