

For Research Use Only



# Phospho-STAT5A (Ser726) Monoclonal Matched Antibody Pair, PBS Only

Catalog Number:MP50852-1

## Capture Antibody Information

**Catalog Number:**  
66459-1-PBS  
**Host:**  
Mouse  
**Isotype:**  
IgG2a  
**Purification Method:**  
Protein A purification

**Clone ID:**  
1F10F6  
**Reactivity:**  
human, mouse, rat, pig  
**GenBank:**  
BC027036  
**Immunogen Catalog Number:**  
Ag19546

**Conjugate:**  
Unconjugated  
**Full name:**  
signal transducer and activator of  
transcription 5A  
**Gene ID:**  
6776

## Detection Antibody Information

**Catalog Number:**  
60596-1-PBS  
**Host:**  
Mouse  
**Isotype:**  
IgG1  
**Purification Method:**  
Protein G purification

**Clone ID:**  
3D5G12  
**Reactivity:**  
human  
**GenBank:**  
BC027036

**Conjugate:**  
Unconjugated  
**Full name:**  
signal transducer and activator of  
transcription 5A  
**Gene ID:**  
6776

## Applications

**Tested Applications:**  
N/A

**Range:**

**Recommended Dilutions:**  
It is recommended that this reagent  
should be titrated in each testing  
system to obtain optimal results.

## Product Information

MP50852-1 targets Phospho-STAT5A (Ser726) in immunoassays as a matched antibody pair. Validated in N/A.  
Capture antibody: STAT5A Monoclonal antibody, PBS Only (Capture) 66459-1-PBS (1F10F6). 100 µg. Concentration 1 mg/ml.  
Detection antibody: STAT5A Monoclonal antibody, PBS Only (Detector) 60596-1-PBS (3D5G12). 100 µg. Concentration 1 mg/ml.  
Unconjugated mouse monoclonal antibody pair in PBS only storage buffer at a concentration of 1 mg/mL, ready for conjugation.  
Matched antibody pairs are designed for use in a variety of assays and platforms that require matched antibody pairs.  
Antibody use should be optimized for each application and assay.

## Storage

**Storage:**  
Store at -80°C.  
**The product is shipped with ice packs. Upon receipt, store it immediately at -80°C**  
**Storage buffer:**  
PBS only

For technical support and original validation data for this product please contact:

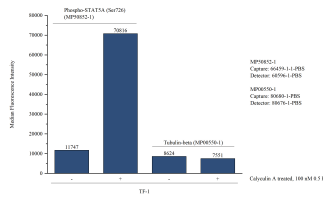
T: 4006900926

E: Proteintech-CN@ptglab.com

W: ptgcn.com

**This product is exclusively available under Proteintech Group brand and is not available to purchase from any other manufacturer.**

## Selected Validation Data



Cytometric bead array in cell lysate using MP50852-1, Phospho-STAT5A (Ser726) Monoclonal Matched Antibody Pair, PBS Only. Capture antibody: 66459-1-PBS. Detection antibody: 60596-1-PBS. Cell lysate: Non-treated TF-1 and Calyculin A treated TF-1 (30 µg/well). Non-related target Tubulin-beta Recombinant Matched Antibody Pair (MP00550-1) was served as control.