

For Research Use Only

SEC11A Monoclonal Matched Antibody Pair, PBS Only



Catalog Number:MP50880-2

Capture Antibody Information

Catalog Number:
67379-2-PBS

Host:
Mouse

Isotype:
IgG1

Purification Method:
Protein G Magarose purification

Clone ID:
1C3D2

Reactivity:
human

GenBank:
BC000359

Immunogen Catalog Number:
Ag6610

Conjugate:
Unconjugated

Full name:
SEC11 homolog A (*S. cerevisiae*)

Gene ID:
23478

Detection Antibody Information

Catalog Number:
67379-4-PBS

Host:
Mouse

Isotype:
IgG1

Purification Method:
Protein G Magarose purification

Clone ID:
1F5G10

Reactivity:
human

GenBank:
BC000359

Immunogen Catalog Number:
Ag6610

Conjugate:
Unconjugated

Full name:
SEC11 homolog A (*S. cerevisiae*)

Gene ID:
23478

Applications

Tested Applications:
Cytometric bead array

Range:
0.098-12.5 ng/mL (Cytometric Bead Array)

Recommended Dilutions:
It is recommended that this reagent should be titrated in each testing system to obtain optimal results.

Product Information

MP50880-2 targets SEC11A in immunoassays as a matched antibody pair. Validated in Cytometric bead array.

Capture antibody: SEC11A Monoclonal antibody, PBS Only (Capture) 67379-2-PBS (1C3D2). 100 μ g. Concentration 1 mg/ml.

Detection antibody: SEC11A Monoclonal antibody, PBS Only (Detector) 67379-4-PBS (1F5G10). 100 μ g. Concentration 1 mg/ml.

Alternative SEC11A matched antibody pairs: MP50880-1

Unconjugated mouse monoclonal antibody pair in PBS only storage buffer at a concentration of 1 mg/mL, ready for conjugation.

Matched antibody pairs are designed for use in a variety of assays and platforms that require matched antibody pairs.

Antibody use should be optimized for each application and assay.

Storage

Storage:
Store at -80°C.

The product is shipped with ice packs. Upon receipt, store it immediately at -80°C

Storage buffer:
PBS only

For technical support and original validation data for this product please contact:

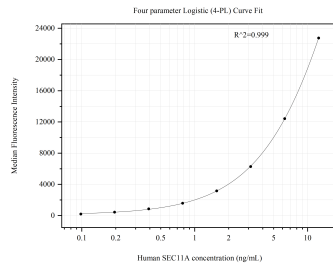
T: 4006900926

E: Proteintech-CN@ptglab.com

W: ptgcn.com

This product is exclusively available under Proteintech Group brand and is not available to purchase from any other manufacturer.

Selected Validation Data



Cytometric bead array standard curve of MP50880-2, SEC11A Monoclonal Matched Antibody Pair, PBS Only. Capture antibody: 67379-2-PBS. Detection antibody: 67379-4-PBS. Standard: Ag6610. Range: 0.098-12.5 ng/mL