

For Research Use Only

CYP46A1 Monoclonal Matched Antibody Pair, PBS Only



Catalog Number:MP50891-3

Capture Antibody Information

Catalog Number:
68576-6-PBS

Host:
Mouse

Isotype:
IgG1

Purification Method:
Protein G Magarose purification

Clone ID:
1E11E12

Reactivity:
human

GenBank:
BC022539

Immunogen Catalog Number:
Ag16786

Conjugate:
Unconjugated

Full name:
cytochrome P450, family 46, subfamily A, polypeptide 1

Gene ID:
10858

Detection Antibody Information

Catalog Number:
68576-4-PBS

Host:
Mouse

Isotype:
IgG1

Purification Method:
Protein G Magarose purification

Clone ID:
1G10C8

Reactivity:
human

GenBank:
BC022539

Immunogen Catalog Number:
Ag16786

Conjugate:
Unconjugated

Full name:
cytochrome P450, family 46, subfamily A, polypeptide 1

Gene ID:
10858

Applications

Tested Applications:
Cytometric bead array

Range:
0.391-100 ng/mL (Cytometric Bead Array)

Recommended Dilutions:
It is recommended that this reagent should be titrated in each testing system to obtain optimal results.

Product Information

MP50891-3 targets CYP46A1 in immunoassays as a matched antibody pair. Validated in Cytometric bead array.

Capture antibody: CYP46A1 Monoclonal antibody, PBS Only (Capture) 68576-6-PBS (1E11E12). 100 µg. Concentration 1 mg/ml.

Detection antibody: CYP46A1 Monoclonal antibody, PBS Only (Capture/Detector) 68576-4-PBS (1G10C8). 100 µg. Concentration 1 mg/ml.

Alternative CYP46A1 matched antibody pairs: MP50891-1, MP50891-2

Unconjugated mouse monoclonal antibody pair in PBS only storage buffer at a concentration of 1 mg/mL, ready for conjugation.

Matched antibody pairs are designed for use in a variety of assays and platforms that require matched antibody pairs.

Antibody use should be optimized for each application and assay.

Storage

Storage:
Store at -80°C.
The product is shipped with ice packs. Upon receipt, store it immediately at -80°C

Storage buffer:
PBS only

For technical support and original validation data for this product please contact:

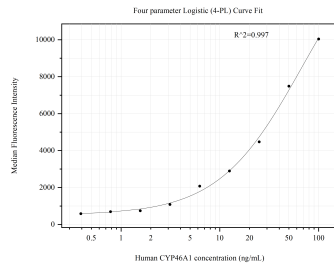
T: 4006900926

E: Proteintech-CN@ptglab.com

W: ptgcn.com

This product is exclusively available under Proteintech Group brand and is not available to purchase from any other manufacturer.

Selected Validation Data



Cytometric bead array standard curve of MP50891-3, CYP46A1 Monoclonal Matched Antibody Pair, PBS Only. Capture antibody: 68576-6-PBS. Detection antibody: 68576-4-PBS. Standard:Ag16786. Range: 0.391-100 ng/mL.