

For Research Use Only

# SLC25A39 Monoclonal Matched Antibody Pair, PBS Only



Catalog Number:MP50906-2

## Capture Antibody Information

Catalog Number:  
60634-3-PBS

Host:  
Mouse

Isotype:  
IgG1

Purification Method:  
Protein G Magarose purification

Clone ID:  
3E6A11

Reactivity:  
human

GenBank:  
BC001398

Immunogen Catalog Number:  
Ag7141

Conjugate:  
Unconjugated

Full name:  
solute carrier family 25, member 39

Gene ID:  
51629

## Detection Antibody Information

Catalog Number:  
60634-4-PBS

Host:  
Mouse

Isotype:  
IgG1

Purification Method:  
Protein G Magarose purification

Clone ID:  
2C6C8

Reactivity:  
human

GenBank:  
BC001398

Immunogen Catalog Number:  
Ag7141

Conjugate:  
Unconjugated

Full name:  
solute carrier family 25, member 39

Gene ID:  
51629

## Applications

Tested Applications:  
Cytometric bead array

Range:  
0.098-100 ng/mL (Cytometric Bead Array)

Recommended Dilutions:  
It is recommended that this reagent should be titrated in each testing system to obtain optimal results.

## Product Information

MP50906-2 targets SLC25A39 in immunoassays as a matched antibody pair. Validated in Cytometric bead array.

Capture antibody: SLC25A39 Monoclonal antibody, PBS Only (Capture) 60634-3-PBS (3E6A11). 100  $\mu$ g. Concentration 1 mg/mL.

Detection antibody: SLC25A39 Monoclonal antibody, PBS Only (Detector) 60634-4-PBS (2C6C8). 100  $\mu$ g. Concentration 1 mg/mL.

Unconjugated mouse monoclonal antibody pair in PBS only storage buffer at a concentration of 1 mg/mL, ready for conjugation.

Matched antibody pairs are designed for use in a variety of assays and platforms that require matched antibody pairs.

Antibody use should be optimized for each application and assay.

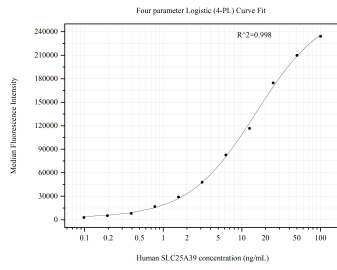
## Storage

Storage:  
Store at -80°C.  
**The product is shipped with ice packs. Upon receipt, store it immediately at -80°C**  
Storage buffer:  
PBS only

For technical support and original validation data for this product please contact:  
T: 4006900926 E: Proteintech-CN@ptglab.com W: ptgcn.com

**This product is exclusively available under Proteintech Group brand and is not available to purchase from any other manufacturer.**

## Selected Validation Data



Cytometric bead array standard curve of MP50906-2, SLC25A39 Monoclonal Matched Antibody Pair, PBS Only. Capture antibody: 60634-3-PBS. Detection antibody: 60634-4-PBS. Standard: Ag7141. Range: 0.098-100 ng/mL