

For Research Use Only

SLC20A1 Monoclonal Matched Antibody Pair, PBS Only



Catalog Number:MP51039-1

Capture Antibody Information

Catalog Number:
60724-1-PBS

Host:
Mouse

Isotype:
IgG1

Purification Method:
Protein G Magarose purification

Clone ID:
1H5E2

Reactivity:
human

GenBank:
BC019944

Immunogen Catalog Number:
Ag28848

Conjugate:
Unconjugated

Full name:
solute carrier family 20 (phosphate transporter), member 1

Gene ID:
6574

Detection Antibody Information

Catalog Number:
60725-1-PBS

Host:
Mouse

Isotype:
IgG1

Purification Method:
Protein G Magarose purification

Clone ID:
1B3G11

Reactivity:
human

GenBank:
BC019944

Immunogen Catalog Number:
Ag3084

Conjugate:
Unconjugated

Full name:
solute carrier family 20 (phosphate transporter), member 1

Gene ID:
6574

Applications

Tested Applications:
Cytometric bead array

Range:
0.098-100 ng/mL (Cytometric Bead Array)

Recommended Dilutions:
It is recommended that this reagent should be titrated in each testing system to obtain optimal results.

Product Information

MP51039-1 targets SLC20A1 in immunoassays as a matched antibody pair. Validated in Cytometric bead array.

Capture antibody: SLC20A1 Monoclonal antibody, PBS Only (Capture) 60724-1-PBS (1H5E2). 100 μ g. Concentration 1 mg/ml.

Detection antibody: SLC20A1 Monoclonal antibody, PBS Only (Detector) 60725-1-PBS (1B3G11). 100 μ g. Concentration 1 mg/ml.

Unconjugated mouse monoclonal antibody pair in PBS only storage buffer at a concentration of 1 mg/mL, ready for conjugation.

Matched antibody pairs are designed for use in a variety of assays and platforms that require matched antibody pairs.

Antibody use should be optimized for each application and assay.

Storage

Storage:

Store at -80°C.

The product is shipped with ice packs. Upon receipt, store it immediately at -80°C

Storage buffer:

PBS only

For technical support and original validation data for this product please contact:

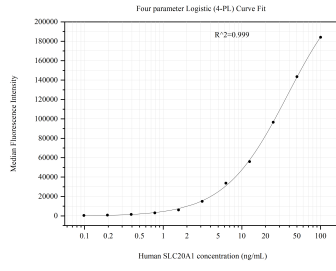
T: 4006900926

E: Proteintech-CN@ptglab.com

W: ptgcn.com

This product is exclusively available under Proteintech Group brand and is not available to purchase from any other manufacturer.

Selected Validation Data



Cytometric bead array standard curve of MP51039-1, SLC20A1 Monoclonal Matched Antibody Pair, PBS Only. Capture antibody: 60724-1-PBS. Detection antibody: 60725-1-PBS. Standard:Ag3084. Range: 0.098-100 ng/mL.