

For Research Use Only

# PARK7,DJ-1 Hybrid Matched Antibody Pair, PBS Only



Catalog Number:MP80004-1

## Capture Antibody Information

**Catalog Number:**  
82913-1-PBS  
**Host:**  
Rabbit  
**Isotype:**  
IgG  
**Purification Method:**  
Protein A purification

**Clone ID:**  
230124E12  
**Reactivity:**  
human  
**GenBank:**  
BC008188  
**Immunogen Catalog Number:**  
Ag2287

**Conjugate:**  
Unconjugated  
**Full name:**  
Parkinson disease (autosomal recessive, early onset) 7  
**Gene ID:**  
11315

## Detection Antibody Information

**Catalog Number:**  
68802-1-PBS  
**Host:**  
Mouse  
**Isotype:**  
IgG2a  
**Purification Method:**  
Protein A purification

**Clone ID:**  
1E5C3  
**Reactivity:**  
human  
**GenBank:**  
BC008188  
**Immunogen Catalog Number:**  
Ag2287

**Conjugate:**  
Unconjugated  
**Full name:**  
Parkinson disease (autosomal recessive, early onset) 7  
**Gene ID:**  
11315

## Applications

**Tested Applications:**  
Sandwich ELISA

**Range:**  
0.39-25 ng/mL (Sandwich ELISA)

**Recommended Dilutions:**  
It is recommended that this reagent should be titrated in each testing system to obtain optimal results.

## Product Information

MP80004-1 targets PARK7,DJ-1 in immunoassays as a matched antibody pair. Validated in Sandwich ELISA.

Capture antibody: PARK7/DJ-1 Recombinant antibody, PBS Only (Capture) 82913-1-PBS (230124E12). 100 µg. Concentration 1 mg/ml.

Detection antibody: PARK7/DJ-1 Monoclonal antibody, PBS Only (Detector) 68802-1-PBS (1E5C3). 100 µg. Concentration 1 mg/ml.

Unconjugated rabbit recombinant antibody and mouse monoclonal antibody pair in PBS only storage buffer at a concentration of 1 mg/mL, ready for conjugation. Created using Proteintech's proprietary in-house recombinant technology. Mouse monoclonal antibody and Rabbit Recombinant production enables unrivalled batch-to-batch consistency, easy scale-up, and future security of supply.

Matched antibody pairs are designed for use in a variety of assays and platforms that require matched antibody pairs.

Antibody use should be optimized for each application and assay.

## Storage

**Storage:**  
Store at -80°C.

**The product is shipped with ice packs. Upon receipt, store it immediately at -80°C**

**Storage buffer:**  
PBS only

For technical support and original validation data for this product please contact:

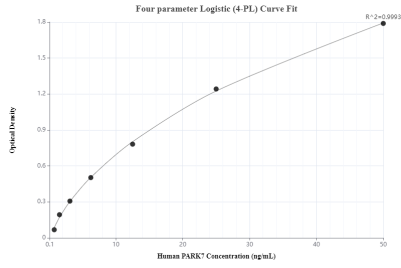
T: 4006900926

E: Proteintech-CN@ptglab.com

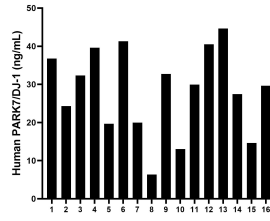
W: ptgcn.com

**This product is exclusively available under Proteintech Group brand and is not available to purchase from any other manufacturer.**

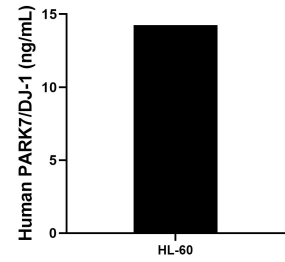
## Selected Validation Data



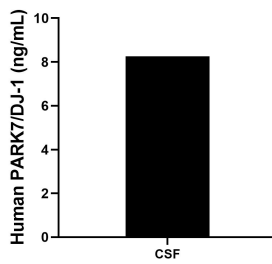
Sandwich ELISA standard curve of MP80004-1, Human PARK7/DJ-1 Monoclonal Matched Antibody Pair - PBS only. 82913-1-PBS was coated to a plate as the capture antibody and incubated with serial dilutions of standard Ag2287. 68802-1-PBS was HRP conjugated as the detection antibody. Range: 0.39-25 ng/mL



Serum of sixteen individual healthy human donors were measured. The human PARK7/DJ-1 concentration of detected samples was determined to be 28.3 ng/mL with a range of 6.3 - 44.6 ng/mL



The mean human PARK7/DJ-1 concentration was determined to be 14.25 ng/mL in HL-60 cell extract based on a 4.3 mg/mL extract load.



The human PARK7/DJ-1 concentration of Human cerebrospinal fluid (CSF) samples were determined to be 8.3 ng/mL