

For Research Use Only

# FcZero-rAb® PE-CoraLite® Plus 594 Anti-Human CD16 (3G8) Rabbit Recombinant Antibody

Catalog Number: PCL594-FcA65612



## Basic Information

**Catalog Number:**  
PCL594-FcA65612

**Concentration:**  
100tests, 5 ul/test

**Source:**  
Rabbit

**Isotype:**  
IgG

**GenBank Accession Number:**  
BC017865

**GeneID (NCBI):**  
2214

**ENSEMBL Gene ID:**  
ENSG00000203747

**UNIPROT ID:**  
P08637

**Full Name:**  
Fc fragment of IgG, low affinity IIIa,  
receptor (CD16a)

**Calculated MW:**  
254 aa, 29 kDa

**Purification Method:**  
Protein A purification

**CloneNo.:**  
3G8

**Recommended Dilutions:**  
FC: 5 ul per 10<sup>6</sup> cells in a 100 µl  
suspension

**Excitation/Emission maxima  
wavelengths:**  
496 nm, 565 nm / 604 nm

## Applications

**Tested Applications:**  
FC

**Species Specificity:**  
human, monkey, non-human primates

**Positive Controls:**

FC : human PBMCs,

## Background Information

CD16 is a 50-70-kDa low affinity Fc receptor found on the surface of natural killer cells, neutrophil polymorphonuclear leukocytes, monocytes and macrophages. CD16 mediates antibody-dependent cellular cytotoxicity (ADCC) and other antibody-dependent responses, such as phagocytosis. CD16 has been identified as Fc receptors FcγRIIIa (CD16a) and FcγRIIIb (CD16b), encoded by two nearly identical genes, FCGR3A and the FCGR3B. Clone 3G8 recognizes both the CD16a and CD16b (PMID: 7592758).

## Storage

**Storage:**

Store at 2-8°C. Avoid exposure to light. Stable for one year after shipment.

**Storage Buffer:**

PBS with 0.09% sodium azide and 0.5% BSA, pH7.3

For technical support and original validation data for this product please contact:

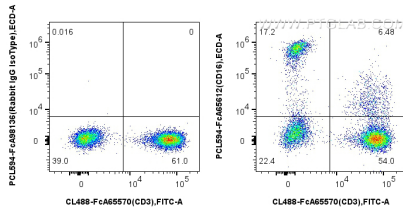
T: 4006900926

E: Proteintech-CN@ptglab.com

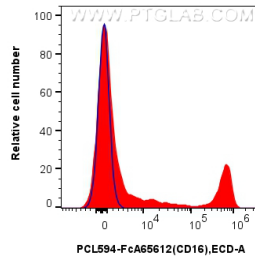
W: ptgcn.com

This product is exclusively available under Proteintech Group brand and is not available to purchase from any other manufacturer.

## Selected Validation Data



1x10<sup>6</sup> human PBMCs were surface stained with CoraLite® Plus 488 Anti-Human CD3 (UCHT1), and 5 ul PE-CoraLite® Plus 594 Anti-Human CD16 (3G8) Rabbit IgG RecAb (PCL594-FcA65612, Clone: 3G8) or Rabbit IgG Isotype Control RecAb (PCL594-FcA98136, Clone: 240953C9). Cells were not fixed.



1x10<sup>6</sup> human PBMCs were surface stained with 5 ul PE-CoraLite® Plus 594 Anti-Human CD16 (3G8) Rabbit IgG RecAb (PCL594-FcA65612, Clone: 3G8) (red) or Rabbit IgG Isotype Control RecAb (PCL594-FcA98136, Clone: 240953C9) (blue). Cells were not fixed.