

For Research Use Only

# PE Anti-Human LRP1 (5A6)

Catalog Number: PE-65233



## Basic Information

<b>Catalog Number:</b> PE-65233	<b>GenBank Accession Number:</b> BC045107	<b>Purification Method:</b> N/A
<b>Size:</b> 100tests, 5 ul/test	<b>GeneID (NCBI):</b> 4035	<b>CloneNo.:</b> 5A6
<b>Source:</b> Mouse	<b>UNIPROT ID:</b> Q07954	<b>Excitation/Emission maxima wavelengths:</b> 496 nm, 565 nm / 578 nm
<b>Isotype:</b> IgG2b	<b>Full Name:</b> low density lipoprotein-related protein 1 (alpha-2-macroglobulin receptor)	
	<b>Calculated MW:</b> 505 kDa	

## Applications

**Tested Applications:**  
FC

**Species Specificity:**  
human

## Background Information

LRP1 (Pro-low-density lipoprotein receptor-related protein 1), also known as A2MR, APOER and CD91, is a type I transmembrane protein that belongs to the LDLR family. LRP1 is synthesized as a transmembrane glycosylated precursor of 600 kDa, and is subsequently cleaved to generate a large 515-kDa N-terminal extracellular subunit and an 85-kDa C-terminal transmembrane subunit, which are noncovalently associated with one another (PMID: 2112085; 8546712). LRP1 is a multifunctional receptor involved in the clearance of a large number of diverse ligands and modulating various cellular processes. LRP1 is implicated in conditions such as atherosclerosis, cancer and neurodegenerative diseases (PMID: 28381441).

## Storage

**Storage:**  
Store at 2-8°C. Avoid exposure to light. Stable for one year after shipment.

**Storage Buffer:**  
PBS with 0.09% sodium azide and 0.5% BSA.

For technical support and original validation data for this product please contact:

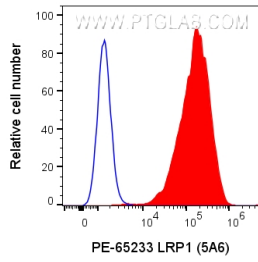
T: 4006900926

E: [Proteintech-CN@ptglab.com](mailto:Proteintech-CN@ptglab.com)

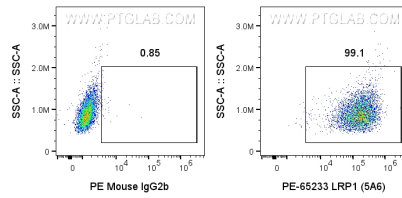
W: [ptgcn.com](http://ptgcn.com)

**This product is exclusively available under Proteintech Group brand and is not available to purchase from any other manufacturer.**

## Selected Validation Data



1x10<sup>6</sup> U-87 MG cells were surface stained with 5 ul PE Anti-Human LRP1 (PE-65233, Clone:5A6) or PE Mouse IgG2b Isotype Control (PE-65128, Clone: MPC-11). Cells were not fixed.



1x10<sup>6</sup> U-87 MG cells were surface stained with 5 ul PE Anti-Human LRP1 (PE-65233, Clone:5A6) or PE Mouse IgG2b Isotype Control (PE-65128, Clone: MPC-11). Cells were not fixed.