

For Research Use Only

PE Anti-Human NCAM1/CD56 Rabbit Recombinant Antibody

Catalog Number: PE-98033



Basic Information

Catalog Number: PE-98033	GenBank Accession Number: BC047244	Purification Method: Protein A purification
Size: 100tests, 5 µl/test	GeneID (NCBI): 4684	CloneNo.: 240078A7
Source: Rabbit	ENSEMBL Gene ID: ENSG00000149294	Excitation/Emission maxima wavelengths: 496 nm, 565 nm / 578 nm
Isotype: IgG	UNIPROT ID: P13591	
	Full Name: neural cell adhesion molecule 1	
	Calculated MW: 95 kDa	

Applications

Tested Applications:
FC

Species Specificity:
human

Background Information

Neural cell adhesion molecule 1 (NCAM1, also known as CD56) is a cell adhesion glycoprotein of the immunoglobulin (Ig) superfamily. It is a multifunction protein involved in synaptic plasticity, neurodevelopment, and neurogenesis. NCAM1 is expressed on human neurons, glial cells, skeletal muscle cells, NK cells and a subset of T cells, and the expression is observed in a wide variety of human tumors, including myeloma, myeloid leukemia, neuroendocrine tumors, Wilms' tumor, neuroblastoma, and NK/T cell lymphomas.

Storage

Storage:
Store at 2-8°C. Avoid exposure to light. Stable for one year after shipment.

Storage Buffer:
PBS with 0.09% sodium azide and 0.5% BSA.

For technical support and original validation data for this product please contact:

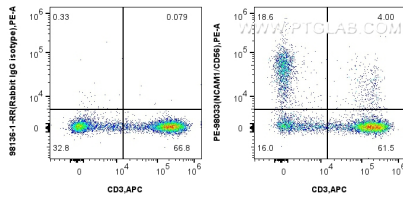
T: 4006900926

E: Proteintech-CN@ptglab.com

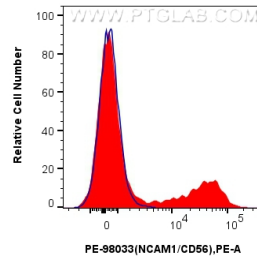
W: ptgcn.com

This product is exclusively available under Proteintech Group brand and is not available to purchase from any other manufacturer.

Selected Validation Data



1x10⁶ human peripheral blood lymphocytes were surface stained with APC Anti-Human CD3 and 5 ul PE Anti-Human NCAM1/CD56 Rabbit Recombinant Antibody (PE-98033, Clone: 240078A7) or PE Rabbit IgG Isotype Control Recombinant Antibody (PE-98136, Clone: 240953C9). Cells were incubated with FC Receptor Block prior to staining. Cells were not fixed.



1x10⁶ human peripheral blood lymphocytes were surface stained with 5 ul PE Anti-Human NCAM1/CD56 Rabbit Recombinant Antibody (PE-98033, Clone: 240078A7) (red) or PE Rabbit IgG Isotype Control Recombinant Antibody (PE-98136, Clone: 240953C9) (blue). Cells were incubated with FC Receptor Block prior to staining. Cells were not fixed.