

For Research Use Only

PE Anti-Human CD86 Rabbit Recombinant Antibody

Catalog Number: PE-98043



Basic Information

Catalog Number:

PE-98043

Size:

100 tests, 5 µl/test

Source:

Rabbit

Isotype:

IgG

GenBank Accession Number:

NM_175862

GeneID (NCBI):

942

ENSEMBL Gene ID:

ENSG00000114013

UNIPROT ID:

P42081

Full Name:

CD86 molecule

Calculated MW:

329 aa, 38 kDa

Purification Method:

Protein A purification

CloneNo.:

240429C6

Excitation/Emission maxima wavelengths:

496 nm, 565 nm / 578 nm

Applications

Tested Applications:

FC

Species Specificity:

human

Background Information

CD86 (also known as B7-2) is a costimulatory molecule belonging to the immunoglobulin superfamily. Primarily expressed on antigen-presenting cells (APCs), including B cells, dendritic cells, and macrophages, CD86 is the ligand for two proteins at the cell surface of T cells, CD28 antigen and CTLA-4. Binding of CD86 with CD28 antigen is a costimulatory signal for activation of the T-cell. Binding of CD86 with CTLA-4 negatively regulates T-cell activation and diminishes the immune response. (PMID: 7513726; 1847722; 11029388; 27591335)

Storage

Storage:

Store at 2-8°C. Avoid exposure to light. Stable for one year after shipment.

Storage Buffer:

PBS with 0.1% sodium azide and 0.5% BSA.

For technical support and original validation data for this product please contact:

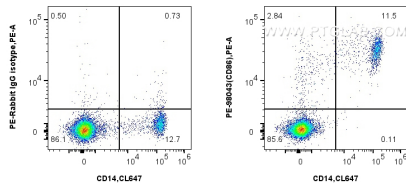
T: 4006900926

E: Proteintech-CN@ptglab.com

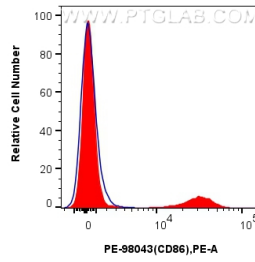
W: ptgcn.com

This product is exclusively available under Proteintech Group brand and is not available to purchase from any other manufacturer.

Selected Validation Data



1x10⁶ human PBMCs were surface stained with CoraLite® Plus 647 Anti-Human CD14 Rabbit Recombinant Antibody, and 5 ul PE Anti-Human CD86 Rabbit Recombinant Antibody (PE-98043, Clone: 240429C6) or PE Rabbit IgG Isotype Control Recombinant Antibody (PE-98136, Clone: 240953C9). Cells were incubated with FC Receptor Block prior to staining. Cells were not fixed.



1x10⁶ human PBMCs were surface stained with 5 ul PE Anti-Human CD86 Rabbit Recombinant Antibody (PE-98043, Clone: 240429C6) (red) or PE Rabbit IgG Isotype Control Recombinant Antibody (PE-98136, Clone: 240953C9) (blue). Cells were incubated with FC Receptor Block prior to staining. Cells were not fixed.