

For Research Use Only

PE Anti-Human CD8b Rabbit Recombinant Antibody

Catalog Number: PE-98103



Basic Information

Catalog Number:

PE-98103

Size:

100 tests, 5 ul/test

Source:

Rabbit

Isotype:

IgG

GenBank Accession Number:

BC100913

GeneID (NCBI):

926

UNIPROT ID:

P10966

Full Name:

CD8b molecule

Calculated MW:

243 aa, 27 kDa

Purification Method:

Protein A purification

CloneNo.:

241326A7

Excitation/Emission maxima wavelengths:

496 nm, 565 nm / 578 nm

Applications

Tested Applications:

FC

Species Specificity:

human

Background Information

CD8b (T-cell surface glycoprotein CD8 beta chain) is an integral membrane glycoprotein that forms disulfide-linked heterodimers with CD8a (CD8 alpha chain). The CD8 alpha/beta heterodimer is the predominant CD8 complex expressed on the cell surface (PMID: 1534146; 2111591). CD8 is a transmembrane glycoprotein predominantly expressed on cytotoxic T cells and can also be found on natural killer cells, cortical thymocytes, and dendritic cells. CD8 serves as a co-receptor for the T cell receptor (TCR). Both CD8 and TCR recognize antigens displayed by an antigen presenting cell (APC) in the context of class I MHC molecules. CD8 plays a role in T cell development and activation of mature T cells.

Storage

Storage:

Store at 2-8°C. Avoid exposure to light. Stable for one year after shipment.

Storage Buffer:

PBS with 0.09% sodium azide and 0.5% BSA.

For technical support and original validation data for this product please contact:

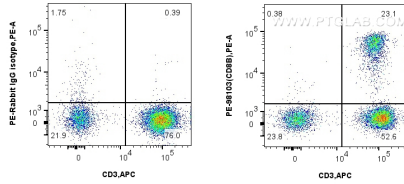
T: 4006900926

E: Proteintech-CN@ptglab.com

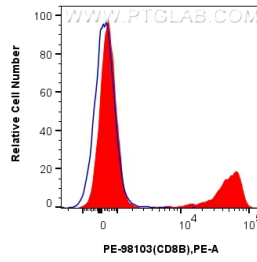
W: ptgcn.com

This product is exclusively available under Proteintech Group brand and is not available to purchase from any other manufacturer.

Selected Validation Data



1x10⁶ human PBMCs were surface stained with APC Anti-Human CD3 and 5 ul PE Anti-Human CD8b Rabbit Recombinant Antibody (PE-98103, Clone: 241326A7) or Isotype Control. Cells were not fixed.



1x10⁶ human PBMCs were surface stained with APC Anti-Human CD3 and 5 ul PE Anti-Human CD8b Rabbit Recombinant Antibody (PE-98103, Clone: 241326A7) (red) or Isotype Control (blue). Cells were not fixed.