

For Research Use Only

# FcZero-rAb™ PE Anti-Human CD29 (TS2/16) Rabbit IgG Recombinant Antibody

Catalog Number: PE-FcA65601



## Basic Information

**Catalog Number:**

PE-FcA65601

**Size:**

100 tests, 5 ul/test

**Source:**

Rabbit

**Isotype:**

IgG

**GenBank Accession Number:**

BC020057

**GeneID (NCBI):**

3688

**ENSEMBL Gene ID:**

ENSG00000150093

**Full Name:**

integrin, beta 1 (fibronectin receptor, beta polypeptide, antigen CD29 includes MDF2, MSK12)

**Calculated MW:**

88 kDa

**Purification Method:**

Protein A purification

**CloneNo.:**

TS2/16

**Excitation/Emission maxima wavelengths:**

496 nm, 565 nm / 578 nm

## Applications

**Tested Applications:**

FC

**Species Specificity:**

human

## Background Information

Integrin beta-1 (ITGB1), also named as CD29, is a 130 kDa single chain type I glycoprotein that is expressed in a heterodimeric complex with one of six distinct  $\alpha$  subunits, comprising the very late activation antigen (VLA) subfamily of adhesion receptors. It is one of the essential surface molecules expressed on human MSC from bone marrow and other sources. The  $\beta$  1 subunit is also broadly expressed on lymphocytes and monocytes, weakly expressed on granulocytes, and not expressed on erythrocytes. These receptors are involved in a variety of cell-cell and cell-matrix interactions.

## Storage

**Storage:**

Store at 2-8°C. Avoid exposure to light. Stable for one year after shipment.

**Storage Buffer:**

PBS with 0.09% sodium azide and 0.5% BSA.

For technical support and original validation data for this product please contact:

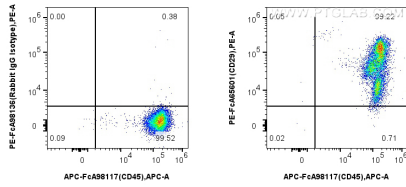
T: 4006900926

E: [Proteintech-CN@ptglab.com](mailto:Proteintech-CN@ptglab.com)

W: [ptgcn.com](http://ptgcn.com)

This product is exclusively available under Proteintech Group brand and is not available to purchase from any other manufacturer.

## Selected Validation Data



1x10<sup>6</sup> human PBMCs were surface stained with FcZero-rAb™ APC Anti-Human CD45 and 5 ul PE Anti-Human CD29 (TS2/16) Rabbit IgG RecAb (PE-FcA65601, Clone: TS2/16), or 5 ul PE Rabbit IgG Isotype Control RecAb (PE-FcA98136, Clone: 240953C9). Cells were not fixed.