

RNA Methylation Essentials Antibody Kit

Catalog Number: PK30016

产品介绍

RNA Methylation Essentials Antibody Kit为研究修饰m6A, m5C, m7G和m1A提供了一种经济有效的工具。对于开始新项目的研究人员、筛选多个潜在目标的研究人员或那些仅仅需要较少体积抗体的研究人员来说是非常适合的。

产品成分

The RNA Methylation Essentials Antibody Kit包含RNA修饰的4个关键蛋白靶点的抗体。

Antigen	Catalog No.	Host, clonality	Tested Reactivity	Applications	Volume
m6A	68055-1-Ig	Mouse monoclonal	H, M, R, Pg	WB, IP, IF, RIP, IHC, ELISA, Dot Blot	20 uL
m5C	68301-1-Ig	Mouse monoclonal	H, M, R	IHC, ELISA, Dot Blot	20 uL
m7G	68302-1-Ig	Mouse monoclonal	H, M	IHC, ELISA, Dot Blot	20 uL
m1A	68636-1-Ig	Mouse monoclonal	H	ELISA, Dot Blot	20 uL

如果此试剂盒中的抗体不满足您的需求，请参考我们的“[RNA Methylation Expanded Antibody Kit](#)”。

包装规格

4× 20 uL

保存条件

-20℃保存。自收到之日起一年内保持稳定。

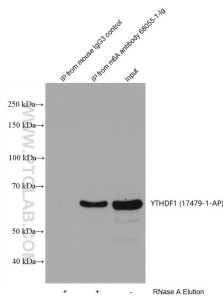
背景介绍

RNA甲基化是一种RNA修饰，涉及在特定核苷酸碱基上添加甲基。RNA残基的甲基化是由“Writers”(甲基转移酶)、“Readers”(结合蛋白)和“Erasers”(去甲基化酶)之间的动态相互作用调节的。m6A、m5C、m7G和m1A是常见的RNA修饰，已被证明在基因表达和包括癌症在内的各种疾病中发挥关键作用。

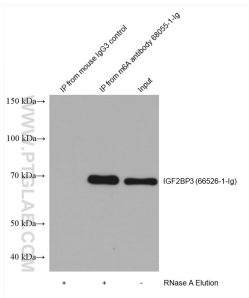
标准实验流程

点击[此处](#)查看我们用于各种应用的标准流程，包括WB、IP、IHC、IF、FC和ELISA。

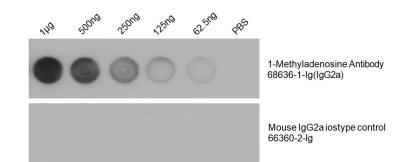
Validation Data



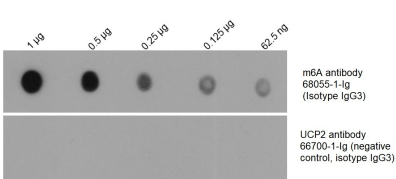
HEK-293 cells were lysed and immunoprecipitated with Protein A-m6A antibody and Protein A-mouse IgG3 control antibody respectively in the presence of RNAase inhibitor cocktail. The immunoprecipitated complex was washed digested by RNase A followed by western blot with YTHDF1(m6A reader) antibody 17479-1-... AP (1:2000). (Lysate: 3.6mg per IP; IP: 15µg antibody and 50µL beads, 4 hours at 4°C; Digestion:



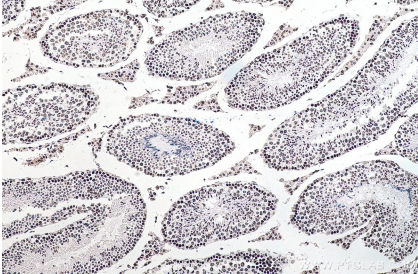
HEK-293 cells were lysed and immunoprecipitated with Protein A-m6A antibody and Protein A-mouse IgG3 control antibody respectively in the presence of RNAase inhibitor cocktail. The immunoprecipitated complex was washed digested by RNase A followed by western blot with IGF2BP3 (m6A reader) antibody 66526-1-... Ig (1:2000). (Lysate: 4.0 mg per IP; IP: 30µg antibody and 50µL beads, 4 hours at 4°C; Digestion:



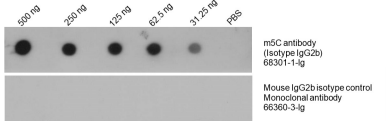
Total RNA was isolated from HeLa cell line and was dotted to NC membrane at different amount as indicated above the dots. The membrane was blocked with 1% BSA and blotted with m1A (1-Methyladenosine) antibody 68636-1-Ig at 1:2000 followed by incubation of HRP-goat anti-mouse secondary antibody. Signal was developed by ECL... substrate. A parallel dot blot was performed using Mouse IgG2a isotype control Monoclonal antibody



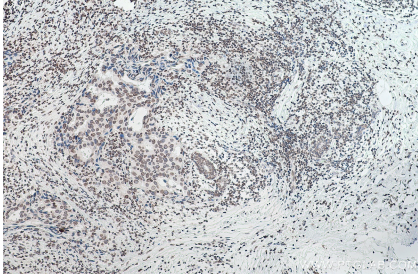
Total RNA was isolated from HEK-293 cell line and was dotted to NC membrane at different amount as indicated above the dots. The membrane was blocked with BSA and blotted with m6A antibody 68055-1-Ig at 1:2000 followed by incubation of HRP-goat anti-mouse secondary antibody. Signal was developed by ECL substrate. A parallel dot blo... was performed using unrelated antibody with the same isotype (UCP2 antibody 66700-1-Ig) at the



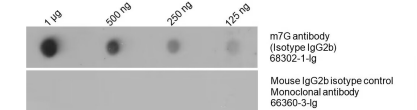
Immunohistochemical analysis of paraffin-embedded mouse testis tissue slide using 68055-1-Ig (m6A antibody) at dilution of 1:4000 (under 10x lens). Heat mediated antigen retrieval with Tris-EDTA buffer (pH 9.0).



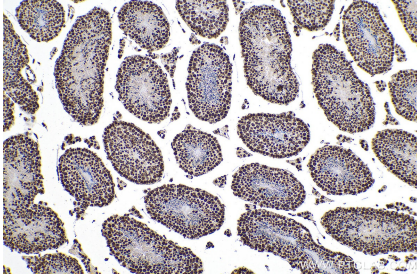
Total DNA was isolated from HeLa cell line and was dotted to NC membrane at different amount as indicated above the dots. The membrane was blocked with BSA and blotted with m5C antibody 68301-1-Ig at 1:5000 followed by incubation of HRP-goat anti-mouse secondary antibody. Signal was developed by ECL substrate. A parallel dot blo... was performed using Mouse IgG2b isotype control Monoclonal antibody 66360-3-Ig at the same dose.



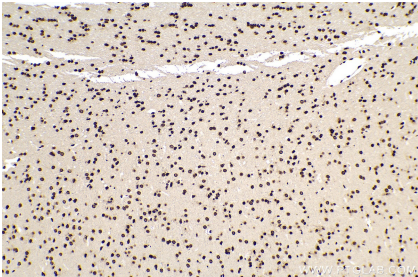
Immunohistochemical analysis of paraffin-embedded human breast cancer tissue slide using 68055-1-Ig (m6A antibody) at dilution of 1:4000 (under 10x lens). Heat mediated antigen retrieval with Tris-EDTA buffer (pH 9.0).



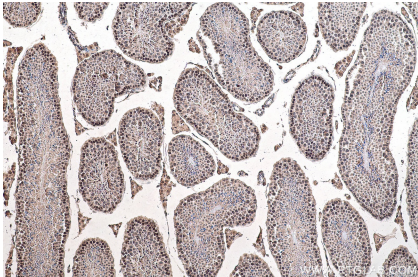
Total RNA was isolated from HeLa cell line and was dotted to NC membrane at different amount as indicated above the dots. The membrane was blocked with BSA and blotted with m7G antibody 68302-1-Ig at 1:5000 followed by incubation of HRP-goat anti-mouse secondary antibody. Signal was developed by ECL substrate. A parallel dot blo... was performed using Mouse IgG2b isotype control Monoclonal antibody 66360-3-Ig at the same dose.



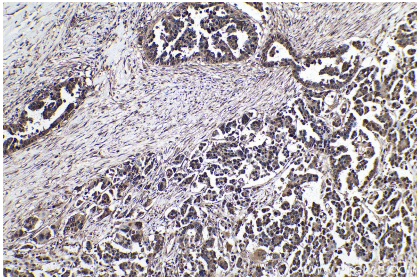
Immunohistochemical analysis of paraffin-embedded mouse testis tissue slide using 68301-1-Ig (m5C antibody) at dilution of 1:5000 (under 10x lens). Heat mediated antigen retrieval with Tris-EDTA buffer (pH 9.0).



Immunohistochemical analysis of paraffin-embedded rat brain tissue slide using 68301-1-Ig (m5C antibody) at dilution of 1:5000 (under 10x lens). Heat mediated antigen retrieval with Tris-EDTA buffer (pH 9.0).



Immunohistochemical analysis of paraffin-embedded mouse testis tissue slide using 68302-1-Ig (m7G antibody) at dilution of 1:2000 (under 10x lens). Heat mediated antigen retrieval with Tris-EDTA buffer (pH 9.0).



Immunohistochemical analysis of paraffin-embedded human colon cancer tissue slide using 68302-1-Ig (m7G antibody) at dilution of 1:2000 (under 10x lens). Heat mediated antigen retrieval with Tris-EDTA buffer (pH 9.0).

For technical support and original validation data for this product please contact

T: 027-87531629

E: Proteintech-CN@ptglab.com

W: ptgcn.com

This product is exclusively available under Proteintech Group brand and is not available to purchase from any other manufacturer.