

For Research Use Only

# PE-Cyanine7 Anti-Mouse CD11b (M1/70) Rat IgG2a Recombinant Antibody

Catalog Number: PY7-65672



## Basic Information

<b>Catalog Number:</b> PY7-65672	<b>GenBank Accession Number:</b> BC156991	<b>Purification Method:</b> Protein A purification
<b>Concentration:</b> 100ug, 200 ug/ml	<b>GeneID (NCBI):</b> 16409	<b>CloneNo.:</b> M1/70
<b>Source:</b> Rat	<b>UNIPROT ID:</b> E9Q604	<b>Recommended Dilutions:</b> FC: 0.05 ug per 10 <sup>6</sup> cells in a 100 µl suspension
<b>Isotype:</b> IgG2a	<b>Full Name:</b> integrin alpha M	<b>Excitation/Emission maxima wavelengths:</b> 496 nm, 565 nm / 778 nm
	<b>Calculated MW:</b> 127 kDa	

## Applications

<b>Tested Applications:</b> FC	<b>Positive Controls:</b> FC : mouse bone marrow cells,
<b>Species Specificity:</b> human, mouse, rabbit, monkey, guinea pig, non-human primates	

## Background Information

Integrins are cell adhesion receptors that are heterodimers composed of non-covalently associated  $\alpha$  and  $\beta$  subunits (PMID: 9779984). CD11b, also known as Integrin alpha M or CR3A, belongs to the integrin alpha chain family. CD11b forms an  $\alpha / \beta$  heterodimer with CD18 (integrin  $\beta$  2). CD11b/CD18 is implicated in various adhesive interactions of monocytes, macrophages and granulocytes as well as in mediating the uptake of complement-coated particles and pathogens (PMID: 9558116; 20008295). CD11b/CD18 is a receptor for the complement protein fragment iC3b, and is also a receptor for fibrinogen, factor X and ICAM1 (PMID: 2971974; 15485828).

## Storage

**Storage:**  
Store at 2-8°C. Avoid exposure to light. Stable for one year after shipment.  
**Storage Buffer:**  
PBS with 0.09% sodium azide and 0.5% BSA, pH7.3

For technical support and original validation data for this product please contact:

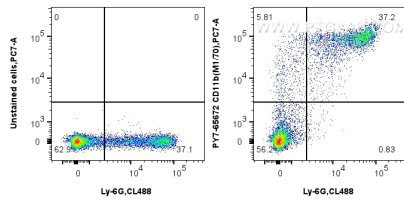
T: 4006900926

E: Proteintech-CN@ptglab.com

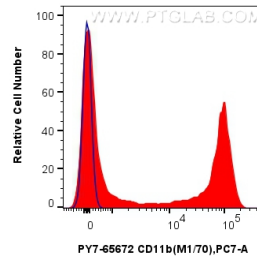
W: ptgcn.com

This product is exclusively available under Proteintech Group brand and is not available to purchase from any other manufacturer.

## Selected Validation Data



1x10<sup>6</sup> mouse bone marrow cells were surface stained with 0.05 ug Coralite® Plus 488 Anti-Mouse Ly-6G Rabbit Recombinant Antibody (CL488-98284, Clone: 242141B11), and 0.05 ug PE-Cyanine7 Anti-Mouse CD11b (M1/70) Rat IgG2a RecAb (PY7-65672, Clone: M1/70) or unstained. Cells were not fixed.



1x10<sup>6</sup> mouse bone marrow cells were surface stained with 0.05 ug PE-Cyanine7 Anti-Mouse CD11b (M1/70) Rat IgG2a RecAb (PY7-65672, Clone: M1/70) (red) or unstained (blue). Cells were not fixed.