

For Research Use Only

# FcZero-rAb® PE-Cyanine7 Anti-Human CD16 (3G8) Rabbit Recombinant Antibody

Catalog Number: PY7-FcA65612



## Basic Information

Catalog Number:

PY7-FcA65612

Concentration:

100tests, 5 ul/test

Source:

Rabbit

Isotype:

IgG

GenBank Accession Number:

BC017865

GeneID (NCBI):

2214

ENSEMBL Gene ID:

ENSG00000203747

UNIPROT ID:

P08637

Full Name:

Fc fragment of IgG, low affinity IIIa, receptor (CD16a)

Calculated MW:

254 aa, 29 kDa

Purification Method:

Protein A purification

CloneNo.:

3G8

Recommended Dilutions:

FC: 5 ul per 10<sup>6</sup> cells in a 100 µl suspension

Excitation/Emission maximum wavelengths:

496 nm, 565 nm / 778 nm

## Applications

Tested Applications:

FC

Species Specificity:

human, monkey, non-human primates

Positive Controls:

FC : human PBMCs,

## Background Information

CD16 is a 50-70-kDa low affinity Fc receptor found on the surface of natural killer cells, neutrophil polymorphonuclear leukocytes, monocytes and macrophages. CD16 mediates antibody-dependent cellular cytotoxicity (ADCC) and other antibody-dependent responses, such as phagocytosis. CD16 has been identified as Fc receptors Fc $\gamma$ RIIIa (CD16a) and Fc $\gamma$ RIIIb (CD16b), encoded by two nearly identical genes, FCGR3A and the FCGR3B. Clone 3G8 recognizes both the CD16a and CD16b (PMID: 7592758).

## Storage

Storage:

Store at 2-8°C. Avoid exposure to light. Stable for one year after shipment.

Storage Buffer:

PBS with 0.09% sodium azide and 0.5% BSA, pH7.3

For technical support and original validation data for this product please contact:

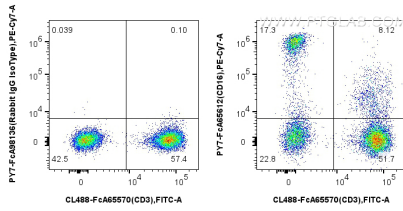
T: 4006900926

E: Proteintech-CN@ptglab.com

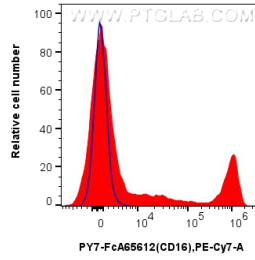
W: ptgcn.com

This product is exclusively available under Proteintech Group brand and is not available to purchase from any other manufacturer.

## Selected Validation Data



1x10<sup>6</sup> human PBMCs were surface stained with CoraLite® Plus 488 Anti-Human CD3 (UCHT1), and 5 ul PE-Cyanine7 Anti-Human CD16 (3G8) Rabbit IgG RecAb (PY7-FcA65612, Clone: 3G8) or Rabbit IgG Isotype Control RecAb (PY7-FcA98136, Clone: 240953C9). Cells were incubated with MonoZero™ Monocytes blocking Reagent (PF00020) prior to staining. Cells were not fixed.



1x10<sup>6</sup> human PBMCs were surface stained with 5 ul PE-Cyanine7 Anti-Human CD16 (3G8) Rabbit IgG RecAb (PY7-FcA65612, Clone: 3G8) (red) or Rabbit IgG Isotype Control RecAb (PY7-FcA98136, Clone: 240953C9) (blue). Cells were incubated with MonoZero™ Monocytes blocking Reagent (PF00020) prior to staining. Cells were not fixed.